

APR 19–MAY 11 2025

KING

JAMES

BY Rajiv Joseph
DIRECTED BY Monteze Freeland

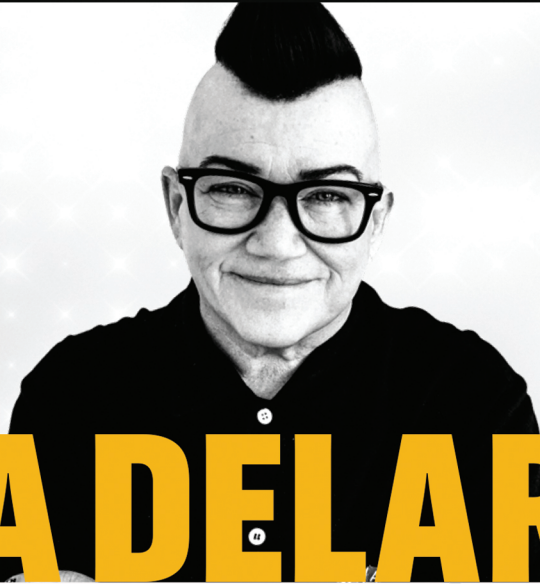
A CO-PRODUCTION WITH CLEVELAND PLAY HOUSE



TAKING IT TO THE STAGE FOR

THE BASH

CITY THEATRE'S SIGNATURE FUNDRAISER



HEADLINER

LEA DELARIA

HOSTED BY

DIXIE SHERWOOD

CABARET STARS

JULIANNE AVOLIO
MARIA BECOATES-BEY
SHANE MCLAUGHLIN
JERREME RODRIGUEZ

MUSIC DIRECTOR

GAMMILLEROLLA

Lea DeLaria is an accomplished Jazz performer who has performed in concert venues all over the world. She is best known as 'Big Boo' from Orange is the New Black (3 SAG Awards) and can currently be seen in the indie feature film Potato Dreams of America, and in the Indie Girls jukebox feature film, Glitter & Doom.
@realleadelaria www.leadelaria.com

GET YOUR TICKETS



GET READY FOR AN **ELECTRIC**
EVENING FULL OF ROCK 'N' ROLL!

SAT.
may
17

FROM THE CO-ARTISTIC DIRECTOR

At its core, Rajiv Joseph's *King James* is a tale of loyalty. At times, it is an admonishment of bandwagon fandom, calling to the court those who falter in their devotion. To be a fan of the Cleveland Cavaliers is to be both an optimist and a realist. Their record has carried more heartbreak than adulation. After spending time in the "216," mounting the first iteration of this co-production at Cleveland Play House, I have learned that Cleveland rallies behind its teams with gusto and authenticity. No matter the outcome, there is always next year.

I believe resilience is the heartbeat of success. And you, our treasured audience, have shown us time and time again that you trust our artistic instincts and community values. Your loyalty has been our lifeline, and my biggest wish is that you help secure another 50 years for this cultural landmark by subscribing to next season, attending our 50th Anniversary BASH fundraiser and continuing to champion City Theatre in your inner circles. Let it be known far and wide that our big red doors are open to all!

On a personal note: It is not lost on me that LeBron's decision to leave home to play for another team mirrors this moment in my life. City Theatre has been my artistic home for 18 years. Yet, this is my last production serving as co-artistic director before assuming the role of artistic director of Pittsburgh's Alumni Theater Company. At age 20, I first walked through City Theatre's doors as a patron. I was instantly enamored with this homey space that blissfully ignited my imagination through its innovation and craft. I still have that feeling when the lights dim before every production. My motto is, "There is no theater magic; there are simply hard-working people working their asses off." The team at City Theatre is top-notch in every department and gives their all to the finished product and equally to understanding the lessons of the process. I will miss being surrounded by their brilliant minds and sharp craftsmanship. This team works hard and consistently goes above and beyond to curate memorable experiences. The reward of being an agent of change is worth the sacrifice.

I thank our friends of City Theatre for your support as I worked alongside my colleagues to uphold the legacy of curating bold and challenging work. I understand how blessed I am to have this singular journey, meeting hundreds of virtuosic artists along the way. The future of City Theatre is bright, in capable hands, and will stand tall as a pioneer of thought-provoking entertainment in our region and far beyond.

So, my last request is that you never doubt or impede the transformative power of storytelling supported by the tenets of equity, diversity, inclusion and accessibility. This uplifts us all.

With Love,

Monteze Freeland

**Start your new year
right with WESA
Inbox Edition.**



**A quick daily summary
of the most important
news in Pittsburgh.**

Sign up at wesa.fm/newsletters



BOARD OF DIRECTORS

City Theatre is deeply grateful to the following community of volunteers who support City Theatre's mission, programming, and artists by donating their time, wisdom, financial resources, and public advocacy. The work we do would not be possible without their ongoing leadership and support.

INTERIM

PRESIDENT

Barbara Rudiak †

VICE PRESIDENT

Tamara Tunie †

TREASURER

Michelle McCreery †

SECRETARY

Kenneth A. Glick, MD †

MEMBERS

David Betts †

Steve Carpenter

Tomé Cousin

Betty Cruz

Caitlin Green †

Holly Hatcher-Frazier †

Emily K. Lewis

Benjamin Luczak

Beth Marcello

Joanna Obuzor

Cori Parise †

Sandra Solomon †

Frank Vitale

Deepak Wadhvani

Bria Walker-Rhoze

Nancy D. Washington, PhD

Karen Farmer White

† *Executive Committee Members*

In 2018, by resolution of the board of the directors, City Theatre created an Honorary Board to recognize the extraordinary service of previous volunteers and leaders who have been instrumental to the organization's continued growth and success.

HONORARY BOARD MEMBERS

Carol R. Brown

Tacy Byham, Ph.D.

Judy G. Cheteyan

Alex Condron

Norbert J. Connors, Jr.

Robert M. Frankel, *in memoriam*

Matthew J. Galando

Ira H. Gordon, *in memoriam*

Edward H. Harrell, *in memoriam*

Thomas Hollander, *in memoriam*

Clyde B. Jones III

Gerri Kay, *in memoriam*

Roslyn Litman, *in memoriam*

David E. Massaro

Marcia Morton

Beth W. Newbold

Dee Jay Oshry

Leonard Perfido

David L. Porges

Susan Smerd

Jeffrey Solomon

Iris Amper Walker

Marjorie Walker



Ten
Evenings

Pittsburgh Arts & Lectures

2024/25



**CITY
THEATRE**

CLARE DROBOT and MONTEZE FREELAND
Co-Artistic Directors

JAMES McNEEL
Managing Director



cleveland play house

MICHAEL BARAKIVA
Artistic Director

RACHEL L. FINK
Managing Director

PRESENT

KING JAMES

BY

RAJIV JOSEPH

DIRECTED BY

MONTEZE FREELAND

CAST

Robert Hunter

Michael Patrick Trimm*

Tony Ferrieri**
Scenic Design

Jeffrey Van Curtis
Costume Design

Jakyung C. Seo
Lighting Design

Howard Patterson
Sound Design

Jasmine A. Golphin
Projection Design

Jeffrey Ullom
Dramaturg

Tucker Topel
Assistant Scenic Design

Taylor K. Meszaros*
Stage Manager

April 19 through May 11, 2025
Approx. 2 hours with an intermission

* Members of Actors' Equity Association ** Member of United Scenic Artists

King James was co-commissioned by Steppenwolf Theatre Company, Anna D. Shapiro, Artistic Director, David Schmitz, Executive Director, and Center Theatre Group, Michael Ritchie, Artistic, Douglas C Baker, Producing Director, and received its world premiere in 2022 in co-productions at Steppenwolf Theatre Company, Chicago and Center Theatre Group/Mark Taper Forum, Los Angeles

A CO-PRODUCTION WITH CLEVELAND PLAY HOUSE

Specializing in High Expectations

Is it time to make your move?

Contact me for all of your real estate needs.



Berni Bishop Pirollo
REALTOR®, SRES
(O) 412-521-5500
(C) 412-638-1988
BerniBishop@TPRSold.com



BERKSHIRE HATHAWAY
HomeServices
The Preferred Realty



City Regional Office • 5801 Forbes Avenue
www.ThePreferredRealty.com

©2024 BHH Affiliates, LLC. An independently owned and operated franchisee of BHH Affiliates, LLC. Berkshire Hathaway HomeServices and the Berkshire Hathaway HomeServices symbol are registered service marks of Columbia Insurance Company, a Berkshire Hathaway affiliate. Equal Housing Opportunity.

You don't need to read this ad. We're just here to enjoy the play.

But if you did read this ad, we'd say something like ... Hi!
We're your neighbors at Landesberg Design, and we've been proudly partnering with non-profit institutions like City Theatre since 1982. We'd be delighted to partner with you too.

Design for the common good from Pittsburgh's South Side.

landesbergdesign.com

CHARACTERS

CAST

Shawn

Robert Hunter

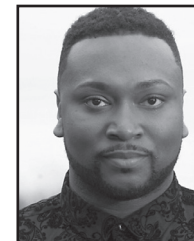
Matt

Michael Patrick Trimm

Setting: Cleveland Heights, Ohio 2004, 2010, 2014, 2016.



RAJIV JOSEPH (Playwright)'s play Bengal Tiger at the Baghdad Zoo was a 2010 Pulitzer Prize finalist for Drama and also awarded a grant for Outstanding New American Play by the National Endowment for the Arts. He has twice won the Obie Award for Best New American Play, first in 2016 with Guards at the Taj (also a 2016 Lortel Winner for Best Play) and then in 2018 with Describe the Night. Other plays include King James, Letters of Suresh, Archduke, Gruesome Playground Injuries, Animals Out of Paper, The Lake Effect, The North Pool and Mr. Wolf. Joseph has been awarded artistic grants from the Whiting Foundation, United States Artists and the Harold & Mimi Steinberg Charitable Trust. He served for three years in the Peace Corps in Senegal.



MONTEZE FREELAND (Director and Co-Artistic Director), a *Pittsburgh Post-Gazette* "Performer of the Year" (2017), has been employed by City Theatre in multiple positions, including actor, teaching artist, and box office associate. In 2020, he joined the full-time staff as Associate Producer and was selected as a Producer in Residence by the National New Play Network. A Baltimore native, his roots in theater began at the Arena Players before moving to Pittsburgh in 2006 to attend Point Park University ('09). He has served as Producing Artistic Associate for Pittsburgh Playwrights Theatre Company and Director of Education for Quantum Theatre Company.

LEBRON JAMES

Prepared by Dramaturg Richard Ullom

2004: LeBron wins Rookie of the Year

History: George W. Bush wins re-election over John Kerry
 Massachusetts legalizes same-sex marriage
 Barack Obama makes a name for himself at the Democratic National Convention
 NASA rover lands on Mars

Pop Culture: Janet Jackson's "wardrobe malfunction" at the Super Bowl
 Facebook and Gmail appear for the first time
 Maroon 5 and Usher top the charts
Shrek 2 was the top-grossing film and *Avenue Q* wins the Tony for Best Musical
 Martha Stewart goes to prison

2010: LeBron makes "The Decision"

History: BP oil disaster spills 170 million gallons into the Gulf of Mexico
 The Affordable Care Act signed into law
 US forces end their combat role in Iraq
 Thirty-three miners rescued after being trapped underground for 69 days

Pop Culture: Betty White hosts *Saturday Night Live*
Sherlock with Benedict Cumberbatch premieres
 Instagram launches and Apple introduces the iPad
Toy Story 3 dominates cinemas and Ke\$ha's "Tik Tok" is the #1 of the year

AND HISTORY

2014: LeBron declares "I'm Back"

History: Republican John Kasick re-elected Ohio governor
 Protests erupt after the police shoot and kill Michael Brown, a Black teenager in Ferguson, Missouri
 Malaysian airliner MH370 disappears from radar without a n explanation
 LA Clippers owner Donald Sterling forced to sell team after making racist remarks

Pop Culture: Jay Leno steps down as host of *The Tonight Show*
 The most popular songs of the year are "Happy" and "Shake It Off"
A Gentleman's Guide to Love & Murder wins Best Musical
12 Years a Slave wins Best Picture at the Oscars hosted by Ellen DeGeneres

2016: LeBron and the Cavaliers win it all

History: Donald Trump wins the Presidential election
 Obama declares a state of emergency for Flint, Michigan's water system
 Forty-nine people are killed in the Pulse nightclub shooting attack in Orlando
 Thanks to a rainstorm, Chicago beats Cleveland in Game 7 of the World Series

Pop Culture: Prince, David Bowie, Alan Rickman, George Michael, Muhammad Ali, Gene Wilder, and Carrie Fisher all pass away
Hamilton dominates the Tony Awards
 Marvel and DC films dominate cinemas
 Pokémon Go takes over the phones of many youths and AirPods debut



WHO'S WHO



ROBERT HUNTER (Shawn) is an accomplished actor and community leader celebrated for his compelling performances in theater, film, and television. His notable stage credits include standout roles such as Jonas Nightingale in *Leap of Faith* at Karamu House, where critics described him as “dynamic and electrifying”; and Bruce in *Jelly Belly* at Ensemble Theatre, a portrayal praised by Cleveland Scene as “masterful” and “absolutely hypnotic.” On screen, he has appeared in *The Land* (directed by Stephen Caple Jr.) and *Criminal Activities* (starring John Travolta). A recipient of the American Black Film Festivals Best Actor Award at just 20 years old, Robert also directs his passion toward youth advocacy as the CEO

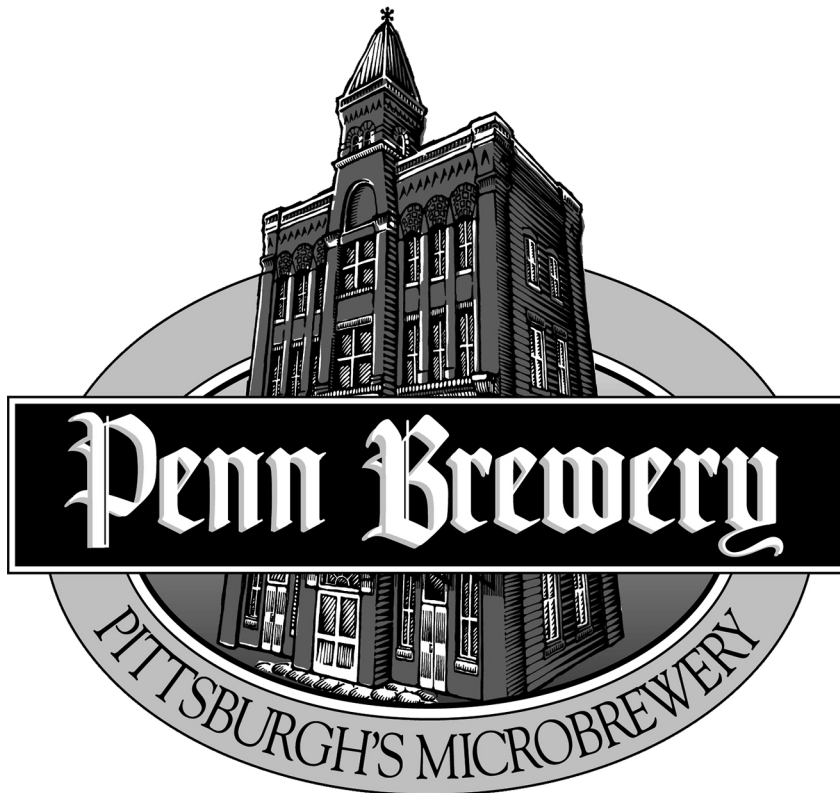
and founder of 5 Pillars Inc., empowering underserved communities through mentorship and leadership programs. Standing at 6 feet with a commanding presence and emotional depth, Robert continues to captivate audiences and inspire change through his work.



MICHAEL PATRICK TRIMM (Matt) is thrilled to be returning to City Theatre after previously appearing in *Miss Bennet: Christmas at Pemberley*. Other Select Theater credits include: Public Theater (*Julius Caesar*) Pittsburgh Public Theater (*A Few Good Men*, *American Son*, *Dial M for Murder*, *The Merchant of Venice*), PICT (*As You Like It*, *A Christmas Carol*), Kitchen Theatre (*Hand to God*), Hangar Theatre (*Little Women*), Oldcastle Theater (*Sheepdog*), Ithaca Shakespeare Company (*Henry V*, *A Midsummer Night's Dream*), Kinetic Theater (*The Illustrious Invalid*), W.H.A.T. (*Raging Skillet*), and 4615 Theater (*Dracula*). Michael is an alumnus of Ithaca College (BFA Acting). michaelpatricktrimm.com
This is for Thomas Trimm.

TONY FERRIERI (Scenic Designer) *King James* marks Tony's 211th production with City Theatre. Awards and milestones include The Carol R. Brown Creative Achievement Award for Established Artist, New Works Festival Lifetime Achievement Award, "Designer of the Year" by *Pittsburgh City Paper* and *Post Gazette*, The Frankel Award, Fred Kelly Award for Outstanding Achievement, Harry Schwalb Excellence in the Arts Award, Features in *Live Design* and *Stage Directions* magazines, 43 years as Resident Scenic Designer at City Theatre, and over 580 scenic designs. Recent designs include: *Art of Wise* and *The Bluegrass Mile* for Pittsburgh Playwrights Theater, *Crocodile Fever* and *The Skeleton Crew* for barebones productions, *The Coffin Maker* for Pittsburgh Public Theater, *Southside Stories Revisited* and *Native Gardens* for City Theatre, *Hamlet* for Quantum Theatre, *Anything Goes* for Pittsburgh Civic Light Opera, *Smart Blonde* for 59E59 Theatre in New York, *Feeding the Dragon* for Hartford Stage and Primary Stages, *Carousel* for Lincoln Park Performing Arts Center, *The Book of Mormon* for Pittsburgh Civic Light Opera Cabaret, *Uncle Tom's Cabin* for Pittsburgh Playhouse Conservatory. tferrieri@aol.com.

JASMINE A. GOLPHIN (Projection Designer) is a visual artist and associate artistic director at Maelstrom Collaborative Arts, an interdisciplinary arts venue. Her artistry explores themes of existentialism, surrealism, and emotional awareness through storytelling, photography, film, live performance, virtual reality, and projection design - all typically in relationship to societal marginalization. In 2022, Jasmine became the first apprentice in Dobama Theatre's FOCUS Program, which led to projection-designing *Cinderella* at Theater Under the Stars, *Matilda Jr* at the Brooklyn Music School, and *Thurgood* and *King James* at Cleveland Play House. Her essay, "Black Woman [Unintentionally] in Tech" was supported by NEW INC and Meta Open Art. Her VR Experience "FACEBOOKLAND" was supported by SPACES, the Satellite Fund through The Andy Warhol Foundation for the Visual Arts Regional Regranting Program. Her latest art installation, "Welcome to the Panopticon!" was supported by Cleveland Camera Rental's 2024 Rental Credit Grant and The Foundation for Contemporary Arts' Emergency Grant.





**MILLED & FERMENTED
& DISTILLED & AGED &
BOTTLED & LABELED
IN PITTSBURGH.**

**SEE YOU ON
SMALLMAN ST.**

Visit the **WIGLE DISTILLERY** in the heart of the **STRIP DISTRICT** to enjoy **AWARD-WINNING** and locally inspired **CRAFT SPIRITS** exceptional **CUISINE** and innovative **COCKTAILS!**



BOOK A DISTILLERY TOUR

MAKE A RESERVATION



wiglewhiskey.com

WHO'S WHO

HOWARD PATTERSON (Sound Design) is a Pittsburgh-based sound designer, audio engineer, and educator. Howard is the Assistant Teaching Professor of Sound Design at University of Pittsburgh. He has worked on many projects in and around Pittsburgh and is passionate about sonic storytelling. Recent designs have been heard at City Theatre Company, TheatreSquared, Quantum Theatre, University of Pittsburgh and Pittsburgh Playhouse. Howard received his BFA from Point Park University.

JAKYUNG C. SEO (Lighting Design) is a distinguished lighting designer with a portfolio of over 100 productions. Her work has illuminated stages at renowned theatres such as Cleveland Play House, Steppenwolf Theatre Company, and Congo Square Theatre in Chicago, as well as Dobama Theatre and Cleveland Public Theatre in Cleveland. She has also contributed to Contemporary American Theatre Company (CATCO) in Columbus, HEAR Theater in New York, and Lodestone Theatre in Los Angeles. Seo currently serves as the Artistic Director of the Global Women Performing Arts Festival (GWPAF), an initiative focused on elevating the voices of female artists. Under her leadership, GWPAF has hosted virtual events, including a notable collaboration with the Martha Graham Dance Company. She is currently a Professor of Lighting Design and Coordinator of the BFA and MFA Design, Technology, and Production programs at Kent State University.

JEFFREY VAN CURTIS (Costume Designer) is Cleveland Play Houses costume shop supervisor. Last season he designed the CWRU/CPH production, *Middletown*. CPH design credits include *A Carol for Cleveland*, *My Name is Asher Lev*, *Bill W. and Dr. Bob*, *Doubt*, *I Am My Own Wife*, *Rounding Third*, *Proof*, *Dinner with Friends*, and *Art*. In addition to *Middletown*, Curtis CWRU/CPH design credits include *Fifth of July*, *She Stoops to Conquer*, *A Philadelphia Story*, *Twelfth Night*, *The Winter's Tale*, *An Orchard*, and others; along with several CPH Theatre for Children productions. Other design credits include *Singin' on the Ohio* and *The Goblins Will Git You* at The Lantern Theatre, productions at Coconut Grove Playhouse and Studio Arena Theatre, and work on the film *Kansas City*. He has also created wigs for a number of CPH productions. He holds his Master of Fine Arts, Costume Design and Technology from University of Missouri-Kansas City. Jeffrey thanks CPH's costume staff for their creativity, enthusiasm and support.

CLEVELAND PLAY HOUSE, founded in 1915 and recipient of the 2015 Regional Theatre Tony Award, is America's first professional regional theatre. Throughout its rich history, CPH has remained dedicated to its mission to inspire, stimulate, and entertain diverse audiences across Northeast Ohio by producing plays and theatre education programs of the highest professional standards. CPH has produced more than 100 world and/or American premieres, and over its long history more than 12 million people have attended over 1,600 productions. Today, Cleveland Play House celebrates the beginning of its second century of service while performing in three state-of-the-art venues at Playhouse Square in downtown Cleveland.

duolingo



Download on the
App Store



Get it on
Google Play

WHO'S WHO



TAYLOR K. MESZAROS (Stage Manager) is delighted to be back at CTC! She is based in Pittsburgh, spending her time as an AEA Stage Manager and as a Standardized Patient for the University of Pittsburgh Medical School. Favorite credits include *White Christmas*, *The Skin of Our Teeth*, *Hair!*, *A Christmas Carol* (Berkshire Theatre Group), *Frida*, *Young Americans*, *Two Trains Running*, *Schoolgirls*; *Or, the African Mean Girls Play* (Pittsburgh Public Theatre), *What the Constitution Means to Me*, *Native Gardens*, *Fat Ham*, *Somewhere Over the Border*, *Paradise Blue*, *Downstairs*, *Cambodian Rock Band*, *The Burdens*, *Where Did We Sit On the Bus?*, *Pipeline*, *The Absolute Brightness...*, *Wild With Happy*, *Feeding the Dragon*, *Some Brighter Distance*, *Oblivion*, *Smart Blonde*,

South Side Stories, and *Sam Bendrix at the Bon Soir* (City Theatre Company). Love to friends and family for their unwavering support.



JAMES MCNEEL (Managing Director) (he/him) has been managing director at City Theatre for 10 years, having joined the organization in 2015 and making him the longest-serving managing leader in the organization's 50-year history. He previously served in the same position for four seasons at the Contemporary American Theater Festival in Shepherdstown, West Virginia. James has also worked as a literature specialist with the National Endowment for the Arts (NEA); director of development and marketing at Off-Broadway's Cherry Lane Theatre in Greenwich Village; and as general manager and development consultant for the Center for Creative Resources, an arts management firm in

New York City. He holds a B.A. degree from Shepherd University and studied arts management in the Master of Arts program at American University. He currently serves on the board and multiple committees for the League of Resident Theaters (LORT); leads a monthly regional convening of arts and culture organizational leaders, hosted by City Theatre; is a community advisor for newly-constituted Regional Capacity Building Initiative; and continues to volunteer and advocate with industry entities such as the National New Play Network (NNPN), Theatre Communications Group (TCG), Greater Pittsburgh Arts Council, and the Professional Non-Profit Theater Coalition. Originally from West Virginia, James lives in Lawrenceville with Shannon and Lottie.



CLARE DROBOT (Co-Artistic Director) is proud to serve as City Theatre's Co-Artistic Director alongside Monteze Freeland. She joined the staff at the theater in 2015 serving as the Director of New Play Development and later as Associate Artistic Director. A dramaturg, playwright, and producer Clare has worked in various capacities at Premiere Stages at Kean University, Laura Stanczyk Casting, Williamstown Theatre Festival, The McCarter Theatre, The BE Company, Play Penn, and New Dramatists. Her work as a writer has been seen in *Ars Novas ANT FEST* and the *New Hazlett Theatres CSA Series* among others. She serves on the boards of the National New Play Network and Brew House

Association and is a member of the Holocaust Center of Pittsburgh's Generations Group, a Global Fellow through the World Affairs Council of Pittsburgh, and a graduate of Leadership Pittsburgh (LP XXXVIII). BA/ BFA Carnegie Mellon University, member of LMDA.

ACKNOWLEDGEMENTS

SPECIAL THANKS

Michael Barakiva, Rachel Fink, Nathan Henry, Derek Green, Diana Angell,
and the entire Cleveland Play House staff.

Rajiv Joseph

50th Anniversary Fun Fact

City Theatre's first home was at
the Allegheny Community Theatre,
which is now known as the New Hazlett Theater



City Theatre receives state arts funding support through a grant from the Pennsylvania Council on the Arts, a state agency funded by the Commonwealth of Pennsylvania and the National Endowment for the Arts, a federal agency.



works here.

The Allegheny Regional Asset District, a county agency created to support and finance regional assets, including libraries, parks, cultural groups, sports, and civic facilities, and to distribute tax relief to the 128 municipalities of Allegheny County.



Actors marked with * and the Stage Manager in this production are members of Actors' Equity Association, the union of professional Actors and Stage Managers in the United States



The scenic, costume, lighting, and sound designers in LORT Theatres are represented by the United Scenic Artists, Local USA-829 of the IATSE.



The Director is a member of the Stage Directors and Choreographers Society, Inc., an independent national labor union.

City Theatre is a constituent of Theatre Communications Group (TCG), the national organization for the American theatre. City Theatre operates under an agreement between the League of Resident Theatres and Actors' Equity Association, the Union of Professional Actors and Stage Managers in the United States.



90 minutes from Pittsburgh May 24: Free Outdoor Performances with some extra oomph



Big sounds - and sights
in a small town!
Including jazz headliner
Roger Humphries
and the inaugural
Westsylvania Arts Festival,
just steps away
from our stage in
Indiana, Pa.



Blues Headliner
Carolyn Wonderland

Mary Bruton photo

WestsylvaniaJazzAndBlues.org



find visitor
info on
our website



DONOR BENEFITS

New benefits give donors special access!

Giving to City Theatre unlocks new voices for the stage, and new experiences for you! All gifts are cumulative; donors receive giving level benefits as well as benefits of all prior levels. For additional questions please contact Sarah Gabrick, Annual Fund Manager, at sgabrick@citytheatrecompany.org or call 412.431.4400 Ext. 226

\$100-\$249

- Quarterly donor newsletter
- Recognition on website
- Written acknowledgment of donation
- Advance notice of City Theatre events
- Recognition in final season playbill

\$250 - \$499

- Recognition in production playbills all season
- Signed production poster

\$500 - \$999

- Scene shop & backstage tour
- Unique donor code for additional Mainstage tickets
- Invitation to a first rehearsal

\$1,000 - \$1,749

- Invitation to a tech rehearsal
- Invitation to quarterly artist salons

\$1,750 - \$2,999

- Invitation to drinks with Managing Director & Playwright
- Virtual coffee with Montez Freeland



Ready to give?
Scan code to give to
City Theatre today!

\$3,000 - \$4,999

- Invitation to annual Momentum Festival New Play Brunch
- Lunch with Clare Drobot
- Opportunity to sponsor an actor

\$5,000 - \$9,999

- Season-long parking voucher
- Recognition on video screens
- Lunch with James McNeel
- Recognition on production web page
- Opportunity to sponsor designer or choreographer

\$10,000 - \$14,999

- Opportunity to sponsor director
- Production sponsor credit*
- 2 Opening Night invitations
- Signed script of sponsored production
- Curtain speech recognition

\$15,000 - \$19,999

- 4 Opening Night invitations
- Brunch with Managing Director James McNeel & Artistic Directors Clare Drobot and Montez Freeland

\$20,000 +

- Season Underwriter for all productions
- Specially curated City Theatre event for up to 10 individuals

contemporaryamericantheaterfestival
AT SHEPHERD UNIVERSITY

Your summer
destination
for new plays
awaits.

JUL 11-AUG 3, 2025

Shepherdstown, WV



catf.org

*Invitation to first rehearsal and tech rehearsal of sponsored production included

DONOR RECOGNITION

On behalf of City Theatre, **thank you** for your donation this season. All season long, donors like you give to support the work that happens right here at City Theatre. Your belief in our Mission allows us to continue bringing you bold, challenging, new work. If you have any questions about giving, or would like to provide a correction to your name, please reach out to Sarah Gabrick, Annual Fund Manager, at sgabrick@citytheatrecompany.org or by calling 412.431.4400 Ext. 226.

Bolded names indicate increased giving over prior year. All lists are as of 3.20.2025

CITY THEATRE CIRCLE (\$15,000+)

Carol R. Brown

Tonja & Alex Condron
Norbert J. Connors, Jr. &
Janet Rogala

Anne Mundell & David Betts

Barbara A. Rudiak, PhD
Hayes & Patricia Stover
Patrick & Beth Winkler

PLAYWRIGHTS CIRCLE (\$10,000 - \$14,999)

Dr. Kerry Bron &

Mr. Robert C. Levin

The Burke Family

Kathleen & Paul Gaberson

Catherine & Kenneth A. Glick, MD

Brian Jeffrey Gross

Marcia Morton

The Scott K. Noxon Foundation

Walter Limbach Family Fund

DIRECTORS CIRCLE (\$5,000-\$9,999)

Anonymous

The Apter/Mates Family Fund

Judy & Michael Cheteyan

Educational and Charitable
Foundation

Lori McGee

Celine & Paul O'Neill

Sandra & Jeffrey Solomon

Fred Steinberg & Jo DeBolt

Catherine & Deepak Wadhvani

David Zeve

NEW PLAY CIRCLE (\$3,000-\$4,999)

Anonymous

Russell & Kathy Ayres

Matthew J. Galando

Paul Knueven

David Lesko

Beth Marcello & John Rodella

Michelle McCreery

James McNeel

Susan & James Morris

Dee Jay Oshry & Bart Rack

K. Oliver Rea

Lauren & Daniel Resnick

John C. Schlotterer

Gary & Carol Schurman

Peter & Susan Smerd

Tamara Tunie

CENTER STAGE (\$1,750-\$2,999)

Betensky-Kraut Family Fund

Dr. Andrew R. Blair

Clare Drobot & Scott Keating

Ron Duursma

Rhoda Eligator

Holly Hatcher-Frazier, PhD

Joseph Kosciński

Mark T. Phillis

Mark R. Power

Preston & Annette Shimer

Woffington Pittsburgh Theaters

Fund

SPOTLIGHT (\$1,000-\$1,749)

J.R. Ambrose & Eliza Swann

Tacy M. Byham, PhD

Annette Calgaro &

Terrence Lewis

Dianne & Stephen Carpenter

Edwin and Kathryn Clarke Family

Foundation

Cooper-Siegel Family Foundation

Laura M. Deger

Adam & Lucy Drobot

Dolly & Curt Ellenberg

Joseph & Kathleen Fox

Keren Gilboa & Jeremy Holzer

Sharon & James Goldberg

Chela Sanchez & Kyle Haden

Andrew & Jodi Hannah

Janice Harrison

Rhoda & David Hartmann

Jean Anne Hattler, PhD

Linda & Brian Heery

Mary Ann Hobson

Irving and Aaronel Deroy Gruber

Foundation

S&J Karas Fund

Arthur J. Kerr, Jr.

Mark Kochvar & Vicki Helgeson

Laura Penrod Kronk &

Claude Kronk

Carol Lampe

Charisse Lillie & Thomas McGill, Jr.

Marc Masterson

Pam & Ken McCrory

Brian & Sandra McInerney

Eileen & John Olmsted

The Thomas J. Phillis Family

Richard Pietroski & Susan Stuart

Kristi Rogers & Jody R. Schurman

Patricia Schroder

Linda & Richard Shaw

Scott & Kerry Shiller

Myrna & Lee Silverman

Jean Snodgrass

W. Henry & Mary Wynn Snider

Sandra Block & John Suhrie

M. Ellen Tarpey & John Battaglia

Drs. Donna & Michael Tranovich

Francis M. Vitale

Janice Vucic

Janet & Chuck Vukotich

Anne Marie Warren

Bruce & Barbara Wiegand

Join us for the 2025 Season!

TICKETS ON SALE NOW

FrontPorchPGH.com 412-320-4610

Performances at the New Hazlett Theater



May 16th -25th

Director: Kristiann Menotiades

Music Director: Deana Muro



August 15th -24th

Director: Rob James

Music Director: Camille Rolla



front porch

THEATRICALS



**FRONT ROW
(\$500-\$999)**

Sharon Achilles & Stuart Olmsted
Joseph Auria
Raymond & Harriet Baum
Bahar Bazmi
Joyce Berman & Richard Spine
Phyllis & Ron Bianchetti
Lynette Brooks
Laurie & Frank Bruns
Charles Buchanan
Stephanie Bucklew
Dr. Vicky A. Clark
Jim & Jennifer DeGood
Barbara DeRiso & Don Newman
Joshua & Hallie Donner
Robert Ferguson & Elizabeth Evans
Ruth & Mark Fichman
Laryn & Moses Finder
Anne & Bob Follette
Janice Gordon & Robert Kraftowitz
Daina M. Griffith
Clare & Art Guzzetti
John D. Houston II
Mary Ellen Johnson
Jane & Bud Kahn
Janet Kaiser
Susan & Greg Kaminski
Dolores Kara
Peggy Kelley
Bobbi Jo & Jeffrey Leber
Elsa Limbach
Dr. Erin M. Lopata
Dennis Lynch & Barbara Dixon
Christina & David Michelmore
Milena & Kamal Nigam
Dr. William Otto
Richard Parsakian
Mary & Chris Rawson
Sally & Ned Ruffin
Kimberly Sachse & Joseph Grimes
Mindy & Zal Sanjana
Karen L. Scansaroli
Mona & EJ Strassburger

Tom & Judy Thompson
Elaine Wertheim
Sharyn & Herbert Wolfson

**SUPPORTERS
(\$250-\$499)**

Carolyn Abraham & Jerome Apt
Susan Barclay
Gerald Bartolomuucci
Christine & Beau Beard
Hillary Berglund
Diane L. Berman
Pamela Bolkovac
Susan Bonello
Kevin Brewer & Jose Antonio Licon
Linda S. Brown
Thomas J. Burgunder
Lourdes Castellanos & Charles O'Hanlon
Sheila & Alvin Catz
Lynne & Alan Colker
Estelle Comay & Bruce Rabin
Rene Conrad
Ellen & Gilbert DeBenedetti
Jeanne & Robert Drennan
Tamara Dudukovich
John A. Dymun
Tricia & Brian Eccher
Rachael Ellis
Linda Argote & Dennis Epple
Thomas Ferguson & Susan Ryan
Richard Ferro
Paula & Bob Fey
Robert Forman
Regina & Eric Frey
Terri & Thomas Galante
Ruth & Alan Garfinkel
Jane Gilbert
Andrea & David Glickman
Barbara Broff Goldman
Candice A. Gonzalez
Susie Gross
Donna Hansen & Ralph Kemp
Nancy Heastings
Dr. & Mrs. Fred P. Heidenreich
Susan & Robert Hoehl
Donna Hoffman & Richard Dum

Betsy & Alan Hohlfelder
Brian & Michele Kerr
Roberta & David Konefal-Shaer
Theresa Brown & Arthur Kosowsky
Rick & Ann Landesberg
Sandra LaPietra & Alan Helgerman
Prof. Hazel Carr Leroy
Helena Leslie
Lisa Liptak
Katherine & H. Lewis Lobdell
Virginia Mance
Demetria & Brien Marsh
Caitlin Green & Drew Martorella
Ann M. McHoes & Bob Kleinmann
Melissa McSwigan & Robert Raczka
Nancy W. Merenstein
Niveditha Mohan & Arunkumar Sanjeevi
Barb & Jim Moyer
Elinor Nathanson & Peter Kogan
Janice Myers-Newbury
Lourie & Eric Nyberg
Cori & J. Dax Parise
John Patzer & Mary DuQinn
Louise & John Pavia
Mason Radkoff & Jan Watson
Shannon Reed
Natalie Rogers Baric
Susan Rossetti & Curt Woodhead
Deborah Rubin
R. Douglas Rumbarger
Kari Shaffer
Thomas & Deborah Stackrow
Irene & David Tabish
Jane & Ron Thompson
Dr. Edward T. Tomlinson & Dr. Carol Wooten
John & Nancy Traina
Charles Porter & Hilary Tyson
Bria Walker-Rhoze & Tim Rhoze
Alma Wisniewski
Thomas Wyse & Robert Neft
Judith Yanowitz
Fred & Ronnie Cook Zuhlke

**FRIENDS
(\$100-\$250)**

Anonymous
Sharon & Robert Abraham
Joel D. Ambrose
Tessin Amoscato
Carol & Marty Ashby
Ronna & C. Daniel Askin
Greg Baker
Tracy & Michael Barnett
Nancy & Sean Barrett
Ulrike & Guy Battestilli
Dr. Marya Bednerik
Sandi & Peter Behrens
Dolly Bellhouse
Tanya F. Bennitt
Richard Berg
Patti & Sandy Berman
David Binder & Darrell Phillips
Jacob & Stephanie Birnberg
Bernadette Bishop-Pirollo
Tsiona & Alan Blitstein
Bear Brandegeee & Nir Kossovsky
Jill Brethauer
Suzanne Broughton
Michael & Sakina Brunk
Jan F. Bruno
Gail & John Buchanan
Michael Buzzelli
Yvonne Campos
Edward & Margaret Cannon
Dana Casale
Matthew Casebeer
Woody & Joanne Chetlin
Jennifer Chomos
Dr. Patricia Cluss
Susan & William Cohen
Leslie Cooley
Dr. Brett Ashley Crawford
Steve Cuden
Dr. Charles Cullen
Leah Cunningham
Lloyd Cunningham
Ricco & Westlynn Davis
Anthony & Katherine DeCaria
Nick & Judy DeGregorio
Rob DePasquale
Ruth Deutsch
Ave Maria Dlubak
Steven Doerfler
John & LouAnne Dolphin

Susie & George Dull
Ami & Nurit Elis
Marlene H. Ellis
Cyrus Erickson & Larry Mann
Susan & William Evans
Stephanie & Fred Fall
The tenHave Family
Asgerally Fazleabas
Audrey Fennell
Tony & Annette Ferrieri
Marian Finegold
Ilene & Jay Fingeret
Lauri Fink & Mike Gable
Jeffrey & Andrea Fitting
Katherine Flood, MD
Carol Franklin
Monteze Freeland
Erika Freiburger & Matthew Siegler
Robert Friday
Eva & Gary Friedman
Sarah Gaffen
James Galik
John & Therese Gallagher
Ruth & James Garrett
Alice V. Gelormino
William & Margaret Ghrist
Shirley H. Golden
Susan Golomb
Carol & Robert Gomola
Phyllis Moorman Goode
Pamela Grabowski
Elizabeth C. Graf
Kathleen & Christopher Green
Joyce Candi Grove
Arlene & Alfred Grubbs
Norton Gusky
Suzi Hagen & Glenn Ganassi
Jo Ann Haller
Melissa & William Hallett
Susan Hamilton
Ann Harkins
Rebecca Harriman & Robert Seals
Paula & Howard Harris
Lou & Roger Hasket
Tracy Hawkins
Ken Henderson
Mary-Jo & Michael Hennessy
Judith & David Herzog
Mary Ellen & Paul Hilko
Vicky and Steve Hoffman
Charlie Humphrey
Mary & Thomas Hutchins
Bonnie Isacke, PhD & Robert Isacke, Jr.
Daisy Jeffries
Kay & J. Richard Jennings
Janis & Jonas Johnson
Nancy Junker
Peter & Leslie Kaplan
Karen & John Kennedy
Liz Kennon
Stefi Kirschner & Gil Schneider
Laurie Klatscher & Greg Lehane
Betty & Bob Kripp
Carol Krupski & Eris Atar-Krupski
Karen Dorey Kuhar
Ellen & Kurt Kuntz
Jane & Christopher Lacey
Jacqueline Lang
Susan & David Laurent
Barbara Lebeau & Tom Aspell
Johannes Lenferink
Rita Levine
Stanley & Patricia Levine
Marsha Lillie Blanton
Linda Lindenbaum
Brad & Leanne Lisien
Judith & James Longo
David & Cheryl Longstreet
Annie Loub
Mary Ann & John Lovasz
Caitie Lytle
Margaret MacCall
Nanci Maguire
Andrea & Glenn Mahone
Robert & Dow Malnati
Jason & Beverly Manne
Jennifer & Charlie March
Carolyn Mariano
Mark Marsen
Joan & Charles Marstiller
Robert & Debbie Martini
Janet McCall
Kathleen McCann
Maureen McHugh
Anne & Thomas Medsger
Susan & Barry Merenstein
Lizanne Meszaros
Betty Minnotte
Robert & Christine Misback

Clare & William Mundell
Shannon Musgrave
Barbara Nagrant
Carol & Richard Nathenson
Emily Neff
Cynthia Nelson
Jeff Neubauer & Kitty Vagley
Laura & Trevor Norris
Mary Patricia & James Nowalk
Beth & Joe Ober
Joanna Obuzor
Laurie & Dan O'Connell
Denise O'Connor
Connie Ozer
Shelly Pagac
Barbara Parees
Ronnie Parker & Melissa Saul
Richard Pattis & Ellen Olshanksy
Rodney Permigianni &
Nancy Pulsifer
Barbara Piskor
Rita & Daniel Poljak
Ronald Popopatch
Marilyn & David Posner
Kathryn & Jeffrey Powell
Martha Raak
Jessie Ramey &
John Zimmerman
William & LuAnne Richardson
Jan Grimes Ripper &
Doug Ripper
Harriette & Ronald Roadman
Susan & Kevin Rogers
Gerald Rosenfeld
Cynthia Ross-Katz
James Rudolph
Janet Ruperto
Debra & Donald Salvin
Merryl Samuels
Lisa Scales
Dianne & Louis Scansaroli
Edward Scheid
Robert Schurko
Rose Scilla
Janet & Martin Seltman
Halah Shaheen
Elizabeth Shannon
Mary Ellen Shea
Barbara & Larry Shuman
Helena Ruoti & Sam Simone

Cotter Smith
Mary Ann & Thomas Smolinski
Howard & Caren Sniderman
Ruth Snyder
David Sogg & Lisa Parker
Thomas Sokol
Marcia & Mel Solomon
Elizabeth & Jonathan Spatz
Sukanya Srinivasan &
Henry Willis
Mary Ellen Staab
Stuart & Mary Staley
Shyrl Stange
Alan & Kathleen Stehman
Alan Steinberg &
Patricia Mooney
Richard & Lauren Stern
Harmony Sullivan &
Justin Cummings
Irene Surmik
Ellen Sussna-Heyman
Stacia & Dennis Swanson
Peter & Daralynne Swartwout
Suzanne Girard & John Swartz
Corky Tate
Kathleen & Louis Testoni
Cori Thomas
Nancy & Gary Tuckfelt
Kellee Van Aken &
Saul Straussman
Henk van Rooijen
Claire & Melvin Vatz
Karen Wagner
Iris Amper Walker
Jody Clarke Walter &
Edward H. Walter
Jim & Leslie Weber
Barbara & Harry Wenkert
Ken Werner & Lynn Swanson
Judge R. Stanton Wettick, Jr. &
Nancy Hazlett
Kendra Whitlock Ingram &
Ben Ingram
Mary Widom
Marta & Phillip Wilkin
Harton Wolf
Stephen M. Wolfe
Jane Yanosick
Kathleen Zabetakis
Nancy Zions

FRIENDS (UNDER \$100)

Anonymous
Mary Ann & Robert Dunham
Stuart Abramson
Dawn Adams
Joan Adibi
Ryan Alberts
Carla Alese
Braden Alexander
Alexandra Amato
Sharon Ammons
Marina Anania
Janice Anderson
Darlene Angle
Mary & Ken Antol
Janet Arehart
Wendy Arons & Michael Perdrill
Karen Auslander
Barbara Averell
Deanna Badger
Ronald & Nancy Baime
Thomas Bajorek
Thomas Bakaitus, Jr. &
Elizabeth Bershok-Bakaitus
Arcangela & John Balest
Patricia Balkovec
Lydia Balogh
Marcia & Ronald Bandes
Daniel Banks
Taylor Barbieri
Nikki Battestilli
Elaine & Ronald Beck
Carol Becker
Deborah Belajac
Carlyn & Eugene Belczyk
Karen Bell
Sheila Bell
Sue Bell
Sharon & David Bellotti
Neila & Daniel Bendas
Sharon Bernstein
Susan Bertonaschi
Diane Blanton
Jane & Richard Block
Deborah Blohm
Nena Boax
Leslie Bodnarchuk
Paul Bogosian
Thomas Bohn

Kenneth J. Bolden
Carolyn & Michael Bonenberger
Lori & Adam Boone
Alec Boright
Donald Borneman
Karen Boros
Mary Boscia
Catherine Bowser
Amanda Brandes
Sue & Mark Breedlove
Anne Brendel
Kristin & James Brennan
Susan & Richard Brok
Pete Bruening
Rosanna Bucci
Freek Burger
William A. Burgunder, Jr.
Michael Burns
Madeleine Burr
Katy Butler
Kenneth Butler
M. Soledad Caballero
Allison Cahill
Dione Cahillane
Jana Callan
Monica Calvert
Barbara Cammarata
Patrick Cannon
Frank Carbone
Stephanie Carleton
Barbara & Bruce Carney
Carol Caroselli
Colleen Carr
Barbara Carrier
Margaretha Casselbrant
Shirley & James Cassing
Laura Cathey Lubinski
Sheldon & Elaine Catz
Liliana Celedon
Mary Ann Celio
Brenda Ceurvorst
Joan & Howard Charlson
Richard Chesnik &
Stephanie Valetich
Denise Childs
Phyllis Chlebowski
Matthew Cicchinelli
Gary Ciocco
Amy Ciuffoletti

Michele & Garth Clarke
Rosemary K. Coffey
Susan Cokain
Colleen & Michael Colarusso
Dennis Coleman
Jody Compton
Toni & Ray Conaway
Robin Connors
Arlene & Troy Cook
Kea Corbin
Eryn Correa
Gabrielle Corson
Erin Cosgrove
Amy & Michael Couch
Tracy Crawford
Gwyn Cready
Ann Criss
Betty Cruz
Alison Culyba
Joyce Culbya
Catherine & Rhonda Curry
Michelle Curry
Barbara J. Cush
Marija G. Cutlip
Ashley Cvrkel
Frances Czak
Judith Dalessandro
Danielle D'Andrea
Coleen Davis
Jonathan Daybear
Leslie de Runtz
Tracy Morris & Chris DeCardy
Amelia DeChicchis
Cathy & Scott DePoy
Julie DeSeyn
Barbara & Mark DeWitt
Christine Didio
Dayna DiRienzo
Mary Ditch
Sina Dehestani
Michelle Do
Donna Dobblick
Angela Dodds
Mitchell & Diana Domian
Suzanne Donsky
Thalia Dorwick
Dr. Rita G. Drapkin
Marianne Drevna
Tyler Dufalla

Aida & Barry Dugan
Garbie Dukes
Ryan Dumas
Patricia Dunkis
Judith Dunlop
Jenafer Dunn
Leslie Dunn
Allison Dyche
Edward Dzenis
Susan & Daniel Dziubek
Janet M. Edwards
Linda & Lawrence Ehrlich
Robert & Mary Eisenstat
Kimberly El-Harris
Thistle Elias
Monica Esposito
Terry Evangelista
Deborah Evanovich
Bobby Evans
Lara Evans
Marilyn & Charles Evans
Frances & David Fall
Marian Fedak
Richard & Helen Feder
John & Debbie Federico
Peggy Lynn Ferber
Lynn Ference
Susan Fiddes
Robert Fierst
Victor Figueroa
Martha & David Fine
Joan Fiset
Danica Fisher
Susan Fisher
Megan Fitzwater
Lucie Flagg
Mark & Holly Fleischer
Kathleen Flot
Lori Flynn
Dr. Lee Fogarty
Malgorzata Fort
Linda & Kathryn Fowler
Kimberly Francis
Robyn Francis
Adriene Frank
Yolanda Frank
Dan Frankel
Dr. Barbara Freeman
Ann & Gus Frerotte

DONOR RECOGNITION

Eugenia & Robert Friedlander
Karen & Jack Friedman
Michael Friedrich
Reanette & Stephen Frobouck
Janet Fromkin
Joni Fuhrer
Margaret H. Fuhrman
Gwen Gaiser
Nancy Gale & Dave Duggins
Nichole Gantshar
Dan Gawronski
Pamela Geary & William Real
Beth Geibel
Elaine Gelb
Gail Geronio
Ronald & Dorothy Gerstacker
Andrea & James Getsy
Nolly Gibbs
Kevin Gieder
Susan Girardi
Nicole Glass
Nancy Glazener
Gretchen & Ralph Goetz
Dara Goldhagen
Sheila Golding
Lisa Ann Goldsmith
Nancy Goldstein
Thomas Golightly
Georgine Goltko
Elizabeth & Jerold Gordon
Donna Goyak
Deborah Grass
Gail Lynne Gratton
Trudy Gray
Caitlin Green
Martha & Mark Greenblatt
Deborah Greene
Teresa Gregory
Lynn Giffin & James Gergich
Meyer & Mary Grinberg
Victoria Groce
Carol Sikov Gross
Jean & Michael Grossman
Sara Grove
Hanna Gruen
Natalie Guiler
Susan Gura
Julie Hagan
Susan Hagan
Sarah Hahn

Kathleen Hammer
Kathy Hancock
Suzanne Hannegan
Patricia Hargest
Diane Harlacher
Mahnaz & Ross Harrison
Matt Harold
Joyce Hebda
Mara S. Hellman
Janet Henke
Nonie Heystek
William Hicks
Dena Hillison
Cynthia Hinds
Jeffrey L. Hinds
Robert & Carol Hinds
Margie & Gary Hoffman
Tom Hoffman
Catherine Hogan
Pamela Hogans
Susan Hois
Donna Homer
Carole & Stephen Hopey
Kala Hostutler
Chris Howden
Henry Huffman
Adrienne Hunter
Angelina Iannazzi
Palma & Marco Imbarlina
Marie Janssen
Lonnie Jantsch
Caroline & Timothy Johns
David & Nancy Johnson
Linda Jordan
Dorothy Joseph
John Juback
George C. Kasich
Robert Keene
Richard Keitel
Patricia M. Kelly
Marian Kemp
Kathleen Kenney
Eve Goodman
David Khani
John Kihl
Christine Kim
Alex M. Kindler
Joseph Kirby
Elizabeth Francene Kirk
Andy Kirtland

Lynn & Mitt Klein
Michele Klingensmith
Rachel Klipa
Noel Knille
Candice Komar, Esq. & Ivor Hill
Mary Korytkowski & Bruce Herschlag
Don and Susan Kosy
Curtis Kovach
Randy Kovitz
Lisa Krieg
Mary & Barry Kukovich
Rebecca Kumar
Jay Kuntz
Jessica Kuntz
Lauren Kuntz
Janice Kunz
Carla & Joseph Lagattuta
Noemi Lagos
Nick LaMedica
Rebecca Lampert
Dawn Landis
Sally Lapiduss
Darenda & Tim Lease
Stuart & Julie Lebovitz
Michelle Leibow
Amanda Leonard
Madison Lescallete
Doug Levine & Lauren Braun
Ellie & Shelly Levine
Emily Lewis
Cynthia & Paul Liefeld
Sierra Lilac
Linda Limberis
Patti Lindsey
Tammi Lining
Kristen Link & Andrew Mulkerin
Diane Litman & Mark Kahrs
Gail Livingstone
Eleanor Lloyd
Oleain Lockhart
Paul & Dawn Lorincy
Marlene Lotzmann
Carol & Paul Love
Kimberlee Love & Mike Seate
Peggy Lowenstein
Robert M. Lucas
Marcia Luek
Victoria Luperi & Andres Franco
Mary Jo Lynch

DONOR RECOGNITION

Lisa Maccarelli
JA MacDougall
Meryl Macklin
Kathleen Madonna
Clinio Maffia
Paul Magnani
Norman Mahfood
MaryAnne Majestic
Kathleen Maloney & Edward Moore
Mark Mann
Jackie Mantini
Lisa Marcellino
David March & Randall Kesterson
Michael Markun
Elisa Recht Marlin
Bonnie Marsh
Keith Marsh
Dane Marshall
Ashley Martin
John A. Martine
Michael Martorella & Patty Diulus-Myers
David & Cari Maslow
Luci & David Massaro
Kate Mastronie
Melanie Matter
David D. Maxwell
Cathy McCall
Constance McCarthy
Denis & Elizabeth McCarthy
Jolie McCarthy
Mary & Robert McCauley
Diane McClintock
Tricia & James McCormick
Dennis McCracken
Shaunda McDill
Ann McDonough
Sharief McDougale
Lindy McGee
Robert McGrogan
Dianna McKeag
Sheila McKenna
Kendra McLaughlin
Mary McNulty
Jennifer McQuillen
Mary Meade Ziegler
Carry Megens
Megan Melichar
Terry Melis

Patrick Menanno
Karyl Merchant
Devan Mercurio & James Kolb
Jill & Steve Merrill
Toni & George Mesiarik
Marcia Metelsky
Carolyn Metting
Bernadette Meyers
Audrey Millard
Terry & Mary Ann Mohr
Barbara Moleton
Kelsey Molinari
Dennis Monks
Bruce Monty
Nita Moots Kincaid
Nancy Morrison
Donna & Bill Moul
Dr. Nancy Mramor
Arla Muha
Alvaro Muñoz
Matt Musial
Julia Nesbitt
Carrie Newman
Carol Nichols
Deborah Nichols
Fred Noel & Rick Fredin
Marianne L. Novy
Katherine Nowak
Sue Ellen & William Nugent
Dennis O'Keefe
Melinda O'Leary
Barb Ondo
Katie Ong
Maria Paula Orozco Espinel
Osher Lifelong Learning Institute
Karen Ostryniec
Dyann Panepinto
Amy & Anthony Pardo
Marcella Parham
Suzanne Parks
Mary Paschke
Patricia Passeltiner
Janice Peischl
Angela Pell
Julie Perel
Mary Peters & Charles Reese
Josina Peterson
Douglas Pickens
Diane Pickle
Martin Pietrucha
Anthony Polley

Jeffrey L. Pollock, Esq.
Suann Pollock
Joyce Polovich
Beth Pomerantz
Abby Ponce-Pore
George & Marie Popichak
Danielle Powell
Richard Powell
Deborah Prence
Sandra Preuhs
John Previs
Virginia Flavin Pribanic
Thomas Protulipac
Lesa & Albert Pugliese
Prof. Denise Pullen
Ruth Purcell
Nancy Rad
Catherine Raphael
Sunitha Ray
Jay Reifer
John E. Reilly
Rachel Remlinger
Adeline Rennekamp
Lynn & Joseph Ribar
Leila Richards
JoAnn Riley
Valerie & Theodore Roberts
Deborah J. Robinson
Dennis Robinson
Danette Rocco
Gabriela Rodriguez
Lyn Romanko
Allan Rose
Deborah Rosen
Julia Ross
Amber & John Rozel
Chuck Rozewicz
Steve Rudkin
Elizabeth Rupp
Jane Rutkowski
Ina G. Sable
Rosemary Sabol
Judith & Stewart Sadowsky
Sayantee Sahoo
Jacqueline Saladino
Janet Sarbaugh & Bill McAllister
Abigail Sarnacki
P Sauer
Niyati Savur
Gloria & Joseph Sayut
John Scarpaci

DONOR RECOGNITION

David Schaum
Rose Marie & Edward Scheid
Charles & Madeline Schindel
Jennifer & Scott Schmidt
Margaret & Stanley Schmiedecke
Ellie Schoenberger
Phillip Schuller
Emily Medine &
Michael Schwartz
Carol Schwarz
Lee Schwebel
Maureen Scott
Elizabeth Seamans
Christine & Duane Seppi
Amber Sestilio
Samira Shaheen
Jocelyn Sheppard
Stuart Sheppard
Karen Shipkovitz
Laurel Shoemaker
Jennifer Shumar
Adam Siegel
Larry Silverman
Roy & Mary Lisa Simmons
Michael Simon
Amanda Sinkus
Brian Slater
Richard Slaughter
Anna Slobodnyak
Dr. Carol A. Slomski
David Smith
Joseph Smith
Melinda Smith
Sarah Smith
Doreen Smyth
Lin Snavely
Beth & Randy Soergel
Beth Sohngen
Bette Soisson
Janet & Lewis Soltis
Rhoda Sommer & Don Friedman
James & Mary Lou Southwood
Carl Spadaro
Rick & Cathy Speicher
Katherine Kerr Springer
Cheryl Squier
Cindy Stackhouse &
Robert Bergren
Esther Stanton

William Steen Jr.
Kaylee Steimer
Ashante Stephens-Hoye
Deborah Stevenson
Susan Steving
Ruth Still
Faith Stipanovich
Nora Stockhausen
John D. Stofcik
Jean & Charles Stout
Gayle Strandberg
Joyce Stuber
Rebecca Studer
Sandra Stupar
Liz Style
Ramona Sulkowski
Beverly Sullivan
Patricia Sullivan
June Swanson & Richard Gordon
Kevin Sylvester
Debra & Gary Tabas
Kelly Tatone
Beverly Loy Taylor
Kathleen & Ronald Tekely
Linda Thomas
Mark Thomas
Mary C. Thomas
Elizabeth & Michael Thompson
Beverly Thornton-Coleman
Holly Thuma & Larry Meyers
Frank & Helen Todd
Kyle Tomer
Linda Torres & Vincent Petti
Sadie & Del Treese
Kelly Trumbull
Trish Turner
Virginia Tuscano
Kathy Tyler
Catherine Meyers Tyson
Deborah Underwood
Saujas Vaduguru
Henriette & Arjan vanUnnik
Paul Vasquez
Sharon Vay
Peter & Regina Vercilla
Elizabeth Veri
Trumaine Verret-Fleming
David Vinski
Sharon & Ronald Volpe

Victor Vrabel
Gregory & Marla Vroegindewey
Bridget Vyas
Elizabeth Wade
Joan Wagner
Penelope Waite
Ed Wallo
Erin Walsh
Russell Walsh
Kathleen Walton
Darnice Ward
Kate Pieratt-Webb & Clark Webb
Cheryl Weidner
Arlene & Robert Weiner
Elissa Weiss & Clifford Pastel
Dana & David Wettergreen
Rosemarie & Henry Wetzel
Leisl White
Patricia & John Whitehill
Jillian Whitfield
Richard & Lisa Wiedman
Arlene Carbone-Wiley &
Clayton Wiley, MD
Mary & Mark Wilkins
Tiffany Wilhelm & Kyle Bostian
Beth Williams, Esq.
Judy & John Williams
Colleen Williamson
Glenna & Robert Wilson
Helen F. Wingertzahn
Jill Witherell
Andrew Witt
Mary Witul
Darlene & James Wood
Eva Wright
Debra Yadrick
Kathleen Yarzebinski
Sister Rita M. Yeasted
Drs. Adrienne Young and
Allen Wolfert
Corinne M. Zadradnick
Marilyn Zawoyski
Erin Zehr
Steve Zelicoff
Jennifer Zell
Centrella Ziegler
Danny Ziegler
Michael & Susan Zimecki
Elsa Zollars

DONOR RECOGNITION

'IN HONOR OF' GIFTS
Honor someone you love. Honor
someone who loves theater.

**IN HONOR OF
CITY THEATRE STAFF**
Given By
Catherine & Kenneth A. Glick, MD

**IN HONOR OF
JANET WALSH AND
DAVID TRIMMER,
MY FAVORITE THEATER GOERS**
Given By
Erin Walsh

**IN HONOR OF
MARC MASTERSON**
Given By
Ann Harkins

**IN HONOR OF
MELVA GRAHAM**
Given By
Osher Lifelong Learning Institute

'IN MEMORY OF' GIFTS
Memorial tributes to honor
theatre lovers.

IN MEMORY OF ANN HARTY
Given By
Ellen & Gilbert DeBenedetti

**IN MEMORY OF
DENNIS LYNCH**
Given By
Thomas Bohn

**IN MEMORY OF
DIANNA DEWEESE**
Given By
Catherine & Kenneth A. Glick, MD

**IN MEMORY OF
DIANNE DUURSMA**
Given By
Rachael Ellis

**IN MEMORY OF
REV. DR. VICTOR PEISCHL**
Given By
Janice Peischl

IN MEMORY OF SUE O'NEILL
Given By
Prof. Denise Pullen

City Theatre's Vision, Mission, Core Values

Mission:

To provide an artistic home for the development and production of contemporary plays that engage and challenge a diverse audience.

Vision:

To be the finest mid-sized theater in America.

Core Values:

Community | Collaboration | Equity, Diversity, Inclusion & Accessibility | Creativity

CORPORATE, FOUNDATION, AND GOVERNMENT SUPPORT

City Theatre extends its sincere gratitude to the following businesses, foundations and public agencies for their leadership support.

STEEL (\$100,000 +)

Allegheny Regional Asset District
Anonymus
Arthur J. & Betty F. Diskin
Cultural Endowment Fund
The Heinz Endowments
The Shubert Foundation

James M. and Lucy K.
Schoonmaker Foundation
Irene C. Shea Charitable
Foundation
The Grable Foundation
Hilda M. Willis Foundation

PNC Financial Services Group,
Inc.
UPMC/UPMC Health Plan

SILVER (\$1,000-\$9,999)

American Eagle Outfitters
Foundation
Lewis A. and Donna M. Patterson
Charitable Foundation

DIAMOND (\$50,000-\$99,999)

The Hillman Foundation
Donald & Sylvia Robinson
Family Foundation

GOLD (\$10,000-\$19,999)

The Benter Foundation
The Anne L. & George H. Clapp
Charitable and Educational
Trust
Opportunity Fund
W. I. Patterson Charitable Fund
Pennsylvania Council on the Arts,
A state agency

BRONZE (Up to \$999)

Actors' Equity Foundation, Inc.
Ceeva
Queequeg Foundation Trust

PLATINUM (\$20,000-\$49,999)

Jack Buncher Foundation
The Huntington National Bank
National Endowment for the Arts
National New Play Network

King James Community Partners

Youth Enrichment Services (YES) formed in 1994 to create hope out of hopelessness, paint a bright future out of uncertainty and give young people from inner-city and urban communities a portrait of themselves as successful, empowered, and confident leaders. With YES' mentorship, our young people go on to become leaders among their peers, and within their schools, homes, and communities.

PUMP's mission is to make Pittsburgh the most dynamic and diverse place by engaging, educating, and mobilizing all young people to create change in our community. Each year, we engage with over 20,000 neighbors through our advocacy, civic, social, and recreational programming. Our largest program is the Pittsburgh Sports League in which Pittsburghers compete in mixed gender sports leagues and customized competitions throughout the year.

Young Black Motivated Kings and Queens provides youth and families in the Greater Allegheny County area with a safe space where youth can be creative and expressive as they navigate their role in their community and in the world.

SEASON SUBSCRIPTIONS

Enhance your City Theatre experience and take advantage of discounted ticket prices by becoming a subscriber. Prorated and Flex packages are available to best fit your interests and schedule. To subscribe, visit the Box Office, call 412.431.2489, or order online at CityTheatreCompany.org.

GROUP SALES

Save when you bring friends! Groups of 10 or more are eligible for significant discounts. In addition, we are happy to help you plan your event or party. For more information, contact Groups@citytheatrecompany.org.

DISCOUNTED & RUSH TICKETS

Persons under 30 years of age may reserve \$20 advance tickets by calling the Box Office. Seniors age 62 and older may take advantage of rush tickets, \$25 each, available only on the day of the performance. All discounted/rush tickets are subject to availability.

TICKET VALUES

Tickets prices vary by date and demand. In addition, pay-what-you-want performances are offered for each production. Call the box office for dates.

PARKING

City Theatre provides safe, convenient parking for \$10 via lot access at 1317 Bingham St, across from the theatre entrance. Parking is subject to availability. On-street parking meters are monitored until midnight on Friday and Saturday. Visit www.pittsburghparking.com for more information.

LATE SEATING POLICY

Our theatres are very intimate. Out of respect for both the actors and audience, late arrivals will be seated only at the discretion of house management. Consider arriving early to enjoy a beverage in the Gordon Lounge or to visit South Side's many eclectic shops and restaurants.

ELECTRONIC DEVICES

Please turn off all electronic devices. Ringing or vibrating cell phones, pagers, and watches disrupt the performance and interfere with the theatre's sound equipment. **No photography or video recording permitted during the performance.**

City Theatre is committed to providing an environment that is inclusive and welcoming to all patrons. Please identify any special seating needs to our Box Office staff when reserving your tickets in advance by calling 412.431.CITY (2489).



Wheelchair accessible seating is available in both the Mainstage and Lillie Studio Theatres.



Selected performances of each production feature open captioning, audio description, and pre-show introductory workshops for those who are hearing impaired, blind, or have low vision. In addition, select productions will include an American Sign Language Interpreted performance. Performance dates are available online or by contacting the Box Office.



Assistive listening devices are available. Please see the House Manager for details.



Programs are available in both Braille and large print. Please see the House Manager for details.

STAFF

ARTISTIC

Clare Drobot
Monteze Freeland
Katie Trupiano

Co-Artistic Directors

Director of Education &
Accessibility
City Bridges Coordinator
Artistic Assistant &
Community Coordinator

Britt Dorazio
Melva Graham

ADMINISTRATIVE

James McNeel
Jason Clark
Kerry Shiller
Nikki Battestilli
Jim DeGood

Managing Director
Director of Operations
Director of Finance
Marketing Director
Interim Director of
Development

Sarah Gabrick
Joel Ambrose

Annual Fund Manager
Director of Ticketing &
Patron Services

Audrey Fennell

Ticketing &
Development Manager

Amara Walls
Rachael Ellis

Assistant Ticketing Manager
Company Manager/
Box Office Associate
Box Office Associate
Box Office Associate
Patron Services Manager

Jessica Hampton
Devon Young
Jay Chapman
Abi Cedeño
Mel Holley
Allison Roup
AJ Sansonetti
JC Clark
Emily Landis
Dustin Medvid

House Manager
House Manager
House Manager
House Manager
Parking Attendant
Parking Attendant
Facility Manager

TEACHING ARTISTS

Cassidy Adkins
Jamie Agnello
Cynthia Dallas
Britt Dorazio
Rita Dorsch

Brooke Echnat
Ty Greenwood
Claire Sabatine
Melannie Taylor
Colton Vazquez

PRODUCTION

Rachel D'Amboise
Patti Kelly

Production Manager
Resident Production
Stage Manager

Taylor K. Meszaros
John Brucker
Sam Karas
Emma Cummings
Alexx Jacobs
Leah Blackwood
Madison Michalko
Jaime Ericson
Brad Peterson
Tyler Hieb

Resident Stage Manager
Co-Technical Director
Co-Technical Director
Shop Foreman
Properties Manager
Lead Scenic Artist
Costume Manager
Costume Shop Assistant
Sound & Media Engineer
Lighting Manager

FOR THIS PRODUCTION

Kyle Buchheister
Josh Burks
Bob Follette
Jim Ruperto
Christina Dragen-Dima
Tyler Parsonage
Nicole White
Lauren Connolly
Audrey Lewis
Mars Delamater

Carpenter
Carpenter
Carpenter
Carpenter
Electrician
Electrician
Electrician
Production Assistant
Production Assistant
Production Assistant

CONSULTANTS

Landesberg Design
Morgan Barba
Clayton Slater Design
Human Habits

Graphic Design
Freelance Designer
Program Design
Website Development &
Video
Photographer
Audio Describer
Grantwriting Services
Planning

Kristi Jan Hoover
Kellee Van Aken
Benvenuti Arts
Keene Consulting

KINETIC
THEATRE COMPANY
Theatre that can't stand still

May 15–25, 2025
Carnegie Stage

25 W. Main Street
Carnegie, PA 15106

*A fateful hunting trip.
A long-awaited reunion.
A truth revealed.*

Embers

Christopher Hampton's
Riveting Adaptation
of the Classic Novel
by Sandor Marai

PITTSBURGH PREMIERE
Directed by Andrew Paul
Starring Sam Tsoutsouvas,
Jack Wetherall, and
Susie McGregor-Laine

For tickets, please visit ShowClix online at kinetic.showclix.com,
phone Kinetic Theatre at 412.225.9145, or visit kinetictheatre.org.
In-person box office at theatre is open from 1 hour before shows.





The
URBAN
◦ TAP ◦

x x x x x



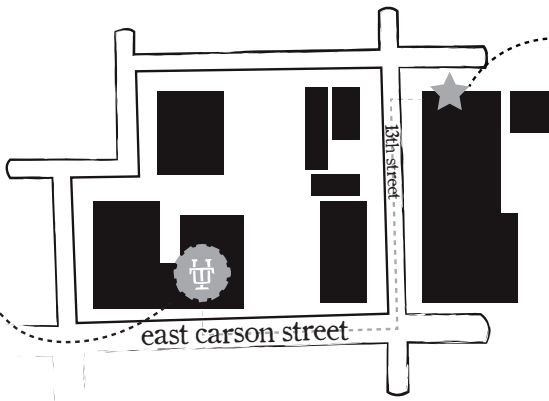
brunch • lunch • dinner



PRESENT THIS AD AFTER THE SHOW

&

RECEIVE 10% OFF DRINKS



YOU ARE HERE

WE ARE HERE

Located one block from the City Theatre on 12th & Carson

