

TONY-NOMINATED PLAY
FROM A PULITZER-WINNING PLAYWRIGHT

SEPT 24-OCT 16, 2022



CLYDE'S

BY
LYNN
NOTTAGE

DIRECTED BY
MONTEZE
FREELAND

CITY
THEATRE
ATRE

UP NEXT AT CITY THEATRE

NOV. 26 – DEC. 18, 2022

Newly acquainted Orthodox Jews, Esther and Schmuli, have entered into an arranged marriage. Author Abe and movie star Julia have entered into a secret, flirtatious correspondence without their spouses' knowledge. Swiveling between 1970s and present day, *The Wanderers* is a funny and mysterious new drama that puts a magnifying glass on the complications of love across generations and what it means to be happy.

THE WANDERERS

BY
**ANNA
ZIEGLER**

DIRECTED BY
**COLETTE
ROBERT**



**CITY
THEATRE**

FROM THE CO-ARTISTIC DIRECTORS

Welcome Back!

It's a thrill to kick off City Theatre's 2022-2023 season and invite audiences to our South Side campus one again. As we continue rebuilding from the effects of the on-going COVID pandemic, we are so grateful to our patrons for their continued support. In this moment, it feels imperative that this season's work uplift the joy of gathering together in community. Theatre provides a vital space for exploring new worlds and encountering perspectives outside our own. In the months to come, we look forward to five main stage productions, the theatre's annual Young Playwrights Festival, the return of a certain Sister, and a collaboration with local and national partners celebrating the legacy of Civil Rights Activist Fannie Lou Hamer. The journeys we will take audiences on this year are all intergenerational; they explore legacy, faith, love, family, and the intricate relationship of individual and collective desires.

Lynn Nottage's *Clyde's* delves into those themes head on. The City Theatre production marks one of the first regional stagings since the play's acclaimed run on Broadway. Set in Reading, PA, *Clyde's* continues to explore a slice of life in Rust Belt America, building on the work Nottage began in her Pulitzer Prize-winning play *Sweat*. Each of the characters we encounter in this truck stop kitchen are formerly incarcerated individuals. Co-mingled with their search for the perfect sandwich, the play invites us to share in their re-entry journeys. Through the theatre's **City Connects** program, we are proud to highlight two community partners **Community Kitchen Pittsburgh** and **Amachi Pittsburgh** whose work supports families and individuals experiencing that journey in Pittsburgh.

We can't wait to share *Clyde's* and the rest of our 48th season with you. Thank you for joining us in community and embarking on a season of theatrical adventures.

Marc Masterson

Clare Drobot

Monteze Freeland

TICKETS ON SALE NOW

PHONE 412-431-CITY (2489) WEB CITYTHEATRECOMPANY.ORG
OR VISIT THE BOX OFFICE

**CITY
THEATRE**

CLYDE'S

INDEPENDENT PUBLIC RADIO

90.5

WESA

Pittsburgh's NPR News Station

91.3
wyep

where the music matters,
from local to legendary



Listen Live

90.5 FM

wesa.fm

or Online

91.3 FM

wyep.org

BOARD OF DIRECTORS

City Theatre is deeply grateful to the following community of volunteers who support City Theatre's mission, programming, and artists by donating their time, wisdom, financial resources, and public advocacy. The work we do would not be possible without their ongoing leadership and support.

PRESIDENT

Caitlin Green †

VICE PRESIDENTS

Matthew J. Galando †

Tamara Tunie †

TREASURER

Alex Condon †

SECRETARY

Kenneth A. Glick, MD †

MEMBERS

David Betts †

Steve Carpenter

Judy Cheteyan

Tomé Cousin

Betty Cruz

Clare Drobot, *ex-officio*

Holly Hatcher-Frazier †

Michelle McCreery, Esq †

James McNeel, *ex-officio*

Delvina L. Morrow †

Marcia Morton

Cori Parise

Barbara Rudiak, PhD †

Susan B. Smerd, PhD

Sandra Solomon

Tamara Tunie †

Deepak Wadhwani

Bria Walker

Nancy D. Washington, PhD

† Executive Committee Members

In 2018, by resolution of the board of the directors, City Theatre created an Honorary Board to recognize the extraordinary service of previous volunteers and leaders who have been instrumental to the organization's continued growth and success.

HONORARY BOARD MEMBERS

Carol R. Brown

Tacy Byham, Ph.D.

Norbert J. Connors, Jr.

Robert M. Frankel, *in memoriam*

Ira H. Gordon, *in memoriam*

Edward H. Harrell

Thomas Hollander

Clyde B. Jones, III

Gerri Kay, *in memoriam*

Roslyn Litman, *in memoriam*

David E. Massaro

Beth W. Newbold

Dee Jay Oshry

Leonard Perfido

David L. Porges

Jeffrey Solomon

Iris Amper Walker

Marjorie Walker

Let's see where
your imagination
takes you today.



The arts make us think, make us feel, and make us wonder. And being able to support the City Theatre Company today makes us proud.

pnc.com



©2022 The PNC Financial Services Group, Inc. All rights reserved. PNC Bank, National Association. Member FDIC
CON PDF 0618-0106

MARC MASTERSON,
CLARE DROBOT, and
MONTEZE FREELAND
Co-Artistic Directors

**CITY
THEATRE**

JAMES McNEEL
Managing Director

PRESENTS

CLYDE'S

BY

LYNN NOTTAGE

DIRECTED BY

MONTEZE FREELAND

CAST

Patrick Cannon*

Khalil Kain*

Latonia Phipps*

Jerreme Rodriguez*

Saige Smith*

Charlese Dawson, Rain Diaz, and Max Pavel, *understudies*

Richard McBride
Dramaturg

Tony Ferrieri**
Scenic Designer

KJ Gilmer
Costume Designer

Jason Lynch**
Lighting Designer

Twi McCallum**
Sound Designer

Patti Kelly*
Production Stage Manager

Samuel G.C. Muñoz
Fight Choreographer

Tomé Cousin
Intimacy Coordinator /
Choreographer

McCorkle Casting Ltd
Casting

September 24 through October 16, 2022

Performed without an intermission.

** Member of Actors' Equity Association ** Member of United Scenic Artists*

World Premiere by the Guthrie Theater.

Originally commissioned by Joe Dowling and produced by Joseph Haj, Artistic Directors

Broadway Premiere Produced by Second Stage Theatre, New York, 2021

Carole Rothman, Artistic Director, Khady Kamara, Executive Director

Never underestimate
the power of a
great performance.

We are proud to support City Theatre and the mission of providing an artistic home of contemporary plays and the ideas that engage and challenge diverse audiences.

UPMC
LIFE CHANGING MEDICINE

UPMC HEALTH PLAN

CHARACTERS

CAST

Jason

Montellous

Clyde

Rafael

Letitia

Patrick Cannon

Khalil Kain

Latonia Phipps

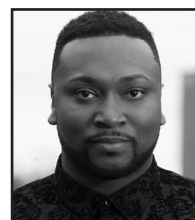
Jerreme Rodriguez

Saige Smith

Setting: A truck stop sandwich shop in Berks County, PA



LYNN NOTTAGE (Playwright) is the first woman in history to win two Pulitzer Prizes for Drama. Her plays have been produced widely in the United States and throughout the world. Recent work includes the libretto for the opera *Intimate Apparel* (LCT), the libretto for the musical *MJ* (Broadway), *Clyde's* (Broadway, 2ST), and co-curating the performance installation *The Watering Hole* (Signature Theater). Other work includes the musical adaptation of *The Secret Life of Bees* (Atlantic); *Mlima's Tale*; *Sweat* (Pulitzer Prize, Obie, Evening Standard Award, Susan Smith Blackburn Prize); *By the Way, Meet Vera Stark* (Lilly Award); *Ruined* (Pulitzer Prize, Obie, Lortel, NY Drama Critics' Circle, AUDELCO, Drama Desk and OCC awards); *Intimate Apparel* (American Theatre Critics and NY Drama Critics' Circle). TV: Writer/Producer of *She's Gotta Have It* (Netflix), Consulting Producer on *Dickinson* (Apple TV+). Awards: PEN/Laura Pels Master Dramatist Award, Doris Duke Artist Award, American Academy of Arts and Letters Award, MacArthur "Genius Grant" Fellowship. She is an Associate Professor at Columbia University School of the Arts, and is a member of the Dramatists Guild.



MONTEZE FREELAND (Director and Co-Artistic Director) is a multidisciplinary artist from Baltimore, MD whose talents include acting, directing, writing, producing and teaching. Monteze is the current Co-Artistic Director of City Theatre Company and was named *City Paper's* Person of the Year for Theatre in 2021, in addition to being named the Performer of the Year in 2017 by the *Post-Gazette*. Select directing credits include: *The Santaland Diaries*, The Young playwrights Festival '17 & '21, *Claws Out: A Holiday Drag Musical* (City Theatre Company); *King Hedley II* & *Fences* (Co-Director with Mark Clayton Southers), *Savior Samuel*, *Miss Julie*, *Clarissa and John*, *Christmas Star* and *Poe's Last Night* (Pittsburgh Playwrights Theatre Company); *I Know Why The Caged Bird Sings* (Prime Stage Theater); *Hairspray*, *Shrek*, *The Addams Family*, and *Freaky Friday* (CLO Summer Academy); readings of *Trouble in Mind* and *The Coffin Maker* (Pittsburgh Public Theater). Many thanks to the incredible cast, design team and City staff.

CLYDE'S

A LESSON ON LEAVING THE PAIN IN THE PAN

By Dramaturg Richard McBride

As we look in on Clyde's Restaurant, we are offered in return a close up look at the backbone of America. When playwright Lynn Nottage started the process of writing her Pulitzer Prize-winning play *Sweat*, she began with Reading, Pa, and Berks County. Nottage continued this theme with *Clyde's*. In an interview with journalist Annette John Hall of Keystone Crossroads, Nottage said, "Reading really touched my heart when I first started going because I found a city that is quite beautiful. It has this incredible architecture and a tremendous spirit. I found that this was the place I wanted to get to know."

It is to our benefit as an audience that Nottage makes us feel the same way about the staff in the kitchen at Clyde's Restaurant. Set in a truck stop sandwich shop, *Clyde's* takes us on a journey of reentry, recovery, and resistance. The characters that make up the kitchen staff are all previously incarcerated individuals. Rafael, Tish, Jason, and Montrellous carry the sort of humility that makes empathy easy. *Clyde's* presents a unique opportunity to see past an individual's mistakes and past transgressions in order to connect with and see who they really are. With *Clyde's*, Nottage gives us a front row seat into the hearts, minds, and even stomachs of these incredibly complex characters on their quest for

the perfect bite. We learn that the perfect bite represents balance, it represents joy, and, most importantly, hope. Often hope is the only pillar previously incarcerated individuals have to rely on. To be free from the walls of prison yet bound by the stigma of what prison "makes you", I would imagine is an unfathomable conundrum. Formerly incarcerated individuals face numerous psychological battles like stigma, isolation, depression, and other mental health struggles. But they also deal with more tangible issues like isolation, homelessness, job discrimination, recidivism, and overall instability. Further, what happens when a person whose morals are, at bare minimum questionable, provides a place to those who have no place at all?

Head Chef and Spiritual Sensi to the younger members of the kitchen crew, Montrellous, helps to usher in one of the strongest themes of the piece overall. Clyde's is a not so gentle reminder that we are a summation of our own experiences, not our mistakes. Montrellous issues

a constant reminder for the kitchen gang to "leave the pain in the pan", drop the baggage at the door and live in the moment. This is a clear challenge to both the characters and the audience.

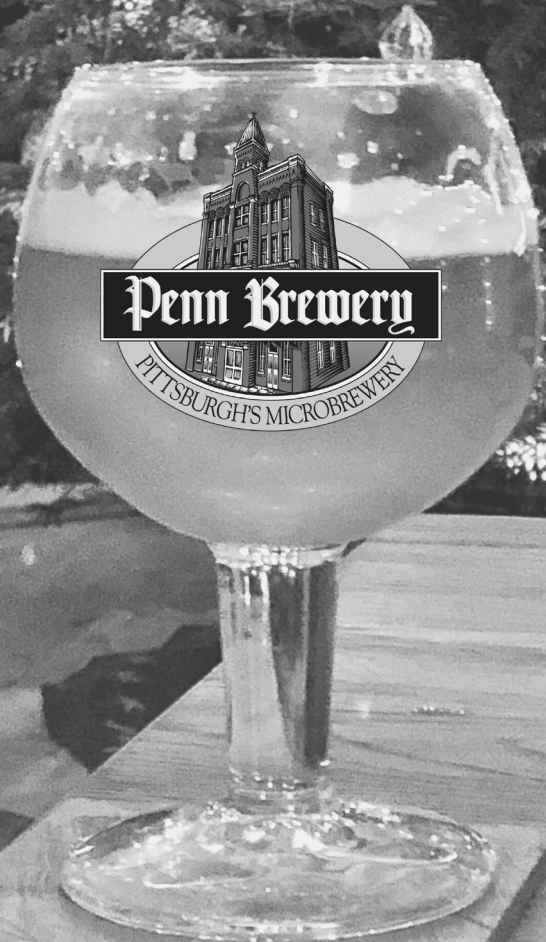


Photo 173490849 / Reading Pa © | Dreamstime.com

It is no longer up to us as an audience or a society to place these characters in our own moral limbo, they have all stood trial already. As you enter the theatre to take in this incredible piece of work, I implore you to leave your own pain in the pan and taste every ingredient this play serves up.

Now Booking Holiday Parties

Host your special dinner, lunch, tour, tasting, or cocktail party at Penn's historic North Side Brewery. See our banquet menus and rooms at pennbrew.com.



WHO'S WHO



PATRICK CANNON (Jason) is a theater and filmmaker based in Pittsburgh, PA. His film projects, *Submit It To Festivals*, *Mulligan*, and *We Are Nowhere* have been Official Selections in five Academy-Award Qualifying Film Festivals. Last year, City Theatre commissioned and produced Patrick's short play, *To Make Bread Out of Toast*, as part of their production of *Homegrown Stories 2*. He has worked with theater companies throughout the country including City Theatre, Pittsburgh Public Theater, Pittsburgh CLO, Pittsburgh Playhouse, Front Porch Theatricals, Boomerang Theater Company, Bricolage, Drury Lane Theatre, Steppenwolf Theatre Garage Rep, The Barnstormers, Strange Tree Group, Mountain Playhouse, and Cape May Stage. Cannon most recently appeared on stage in Pittsburgh Public Theater's productions of *Sweat* (Jason) and *Little Shop of Horrors* (The Dentist). He holds a BA in Theater from Columbia College Chicago and a MFA in Screenwriting and Playwriting from Point Park University. Patrick currently serves as the Artistic Director of Little Lake Theatre Company.



SAIGE SMITH (Letitia) is so grateful to be making her City Theatre Mainstage debut! You may have seen her in City Theatre's virtual production of *Homegrown Stories 2* (Captain Kimber, Nat). Previous credits include: *Sister Act* (Ensemble), *Puffs* (Leanne), *Kinky Boots* (Pat), *A Musical Christmas Carol* (Fan/Alice), *Beyond the Moon* (Mae Jemison) with Pittsburgh CLO, *As You Like It* (Celia), *A Midsummer Night's Dream* (Hermia/ Starveling) with PICT Classic Theatre, and *Welcome to Moonside* (Dawn) with Vigilance Theater. She'd like to thank her family, friends, cast, crew, and production team for the support during this wonderful experience!



LATONIA PHIPPS (Clyde) is a writer and actress who hails from Brooklyn, NY. Her credits include: Jocelyn Bioh's *The African Mean Girl Play* (The Hangar Theater), *Measure for Measure* (The Public Theater), Dominique Morrisseau's *Autumn Harvest*, (Lincoln Center), Katori Hall's *Children of Killers*, (Castillo Theater). She has also worked with acclaimed theaters such as, Theater Row, Signature Theater, Arena Stages, The Negro Ensemble & The Cherry Lane Theater. Phipps has made her mark as a writer with her tour-de-force one woman show, *Fishing In Brooklyn*, and is currently working on her first film titled, "A Calling." Thank you to God and The City Theatre Company for this amazing opportunity.



KHALIL KAIN (Montellous) is a 30 year veteran actor best known for his turn as "Raheem" in the urban classic film *Juice*. For six seasons Khalil graced televisions across the country as Darnell on the sitcom *Girlfriends*. Other films like *Love Jones* and *For Colored Girls* allowed Khalil to shine on the silver screen again. *Clyde's* is a return engagement of sorts, because Khalil performed in City Theatre's marvelous production of *Pipeline* in 2018. Khalil's play *Lambs to Slaughter* just had a successful three week run at the Cherry Lane Theatre in New York City closing in July. So fresh off that run Khalil is happy to be back in Pittsburgh to get blessed by Lynn Nottage and the amazing company here at City Theatre.

Traditional High Tea

2nd Sunday of Every Month



Traditional High Tea consists of assorted scones with spreads, assorted tea sandwiches and mini sandwiches, savory bites, assorted salads, bite-sized desserts, assorted teas with honey, sugar cubes, lemon and milk.

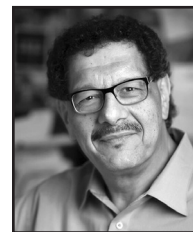
Seating is limited.
Call 412.886.7400
to reserve your spot.



WHO'S WHO



JERREME RODRIGUEZ (Rafael) in-person City Theatre Debut. Last seen in CLO's *Kinky Boots*, *A Chorus Line* and *Sister Act*. In Chicago he played Fernando/ Narrator in Teatro Vistas *Somewhere Over The Border*. Other Pittsburgh credits-Le Beau in *As You Like It* (PICT), Juan in *Plano*, William Kemmler in *The Current War* and *Looking for Violeta* (Quantum Theater), Bob Cratchit in CLO's *A Musical Christmas Carol*, Summer Under The Stars on Hienz Field with Pittsburgh CLO in *A Broadway Musical Celebration* and *The Wizard of Oz, Sweat* (Pittsburgh Public), he originated the role of Kenny in *The Double Threat Trio*, and Paco in *Miss Abigail's Guide...* (CLO Cabaret), Elder Braithwait in *The Book Of Merman*, Lucian in *Wig Out!* (Pittsburgh Rep.), Luke in *Dance Nation* (Barebones) and several shows with Pittsburgh Musical Theater. He originated the roles of Mikael/Raina in *I Like To Be Here* (Theater 167), and was Greg in the national tour of *A Chorus Line*. He's performed with Alba Flamenco in Pittsburgh, and written, directed and starred in Ballets - *Undead & The Watchmakers Song* - with Ventana Ballet in Austin. He's a librettist in the BMI Musical Theater Workshop, and proud alumni of Interlochen Arts Academy and Point Park University.



TONY FERRIERI (Director of Production and Resident Scenic Designer) Awards and milestones include: 43 years with City Theatre, The Carol R. Brown Creative Achievement Award for Established Artist, New Works Festival Lifetime Achievement Award, "Designer of the Year" by Pittsburgh City Paper and *Pittsburgh Post-Gazette*, "Frankel Award," "Fred Kelly Award for Outstanding Achievement," "Harry Schwalb Excellence in the Arts Award," features in *Live Design* and *Stage Directions*, and nearly 550 designs. Recent CTC designs include: *Downstairs*, *The Santaland Diaries*, *One Night in Miami*, *The Roommate*, *Pipeline*, and *Citizens Market*. Other recent designs include: *Feeding the Dragon* for Hartford Stage in CT and Primary Stages at The Cherry Lane in NYC; *Clue*, *Miracle on 34th Street*, *Sweeney Todd*, *Big Fish*, *Mary Poppins*, and *The Little Mermaid* for Lincoln Park Performing Arts Center; *The Book of Merman*, *Double Threat Trio*, *Perfect Wedding*, for CLO Cabaret; *The Current War*, *King Lear*, *Violetta*, *The Master Builder*, *The Winter's Tale* for Quantum Theatre; *True West*, *One Flew Over the Cuckoo's Nest*, *A Streetcar Named Desire* for barebones; *Scared of Sarah* and *A Feminine Ending* for Off the Wall; and *You Say Tomato I Say Shut Up!* for Dana Phil Playhouse Productions. Other credits include designs for Bricolage, Jewish Theatre of Pittsburgh, Carnivale Theatrics, Pittsburgh Irish & Classical Theatre, Emelin Theatre, Northlight Theatre, Madison Rep, TheatreWorks, 1812 Productions, Playhouse Rep, Tuesday Musical Club, and Unseam'd.



PATTI KELLY (Production Stage Manager) is thrilled to return to City Theatre for her 35th season! Having been with the company for over half of its lifetime, some of Patti's favorite shows at City Theatre include *The Old Man and the Old Moon*, *The Royale*, *Hand to God*, *The 39 Steps*, *Marcus; or The Secret of Sweet, Hedwig and the Angry Inch*, *Compleat Female Stage Beauty*, *Gross Indecency: The Three Trials of Oscar Wilde*, *Molly Sweeney*, *The Baltimore Waltz*, and *Our Country's Good*. Other credits include *Hedwig and the Angry Inch* at Hartford Stage; *Hysteria* for Pittsburgh Public Theater; *Richard II*, *The Tempest*, *Othello*, *As You Like It*, *Horse of a Different Color*, *Romeo and Juliet*, and *Macbeth* for Three Rivers Shakespeare Festival; and over 30 plays for the Carnegie Mellon Showcase of New Plays. Patti is a recipient of the Fred Kelly Award for Outstanding Achievement in Theatre and is a proud member of Actors' Equity.

wigle

MILLED & FERMENTED
& DISTILLED & AGED &
BOTTLED & LABELED
IN PITTSBURGH.

SEE YOU ON
SMALLMAN ST.

Visit the **WIGLE DISTILLERY** in the heart of the **STRIP DISTRICT** to enjoy **AWARD-WINNING** and locally inspired **CRAFT SPIRITS** exceptional **CUISINE** and innovative **COCKTAILS!**



BOOK A DISTILLERY TOUR

MAKE A RESERVATION

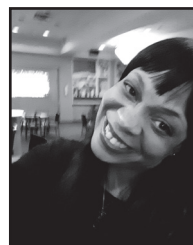


wiglewhiskey.com

WHO'S WHO



RICHARD McBRIDE (Dramaturg) is thrilled to be a part of Clyde's crew! Richard was last seen on stage for a staged reading of *Keyword: Wander* by Clare Drobot. Richard is so excited to share this wonderful piece of work under the direction of the incredible Montez Freeland. He's also excited for you all to see every one of these powerhouse performers. Richard considers himself fortunate to be working with the team at City Theatre, and can't wait for you all to savor this delectable piece of work!



KJ GILMER (Costume Design) is ecstatic to be back at City Theatre. Her previous designs are *The Royale* and *Cafe Putanesca*. A selection of her costume design credits include St. Michael's Playhouse of Vermont, Pittsburgh Opera, Quantum Theatre of Pittsburgh, Philadelphia Shakespeare Festival, Walnut Street Theatre, Arden Theatre Company, Everyman Theatre Company of Baltimore. She is a lecturer in Costume Design at the University of Pittsburgh. Ms. Gilmer is the designer and creator of the moving costume installation masterpiece, Say Her Name Memorial Gown. This gown serves as remembrance of the names of Black women, girls and femmes missing from the narrative as victims of police murder and anti-Black violence. www.shngown.com.



JASON LYNCH (Lighting Designer) is a Chicago-based lighting designer for theatre, dance, opera, and other live performance art and makes his City Theatre Company debut with this production. Recent Chicago credits include work with Chicago Shakespeare Theater, Definition Theatre, Goodman Theatre, Northlight Theatre, Shattered Globe Theatre, Steppenwolf Theatre Company, TimeLine Theatre Company, Victory Gardens Theater, Windy City Playhouse, among others. Regional credits include work with Alley Theatre, Alliance Theatre, American Players Theatre, Arkansas Repertory Theatre, Audible Theatre/Minetta Lane Theatre in NYC, Baltimore Center Stage, City Theatre Company, Dallas Theater Center, Denver Center for the Performing Arts, Long Wharf Theatre, Oregon Shakespeare Festival, Pennsylvania Shakespeare Festival, Repertory Theatre of St. Louis, Seattle Repertory Theater, and TheatreSquared. He is honored to have his recent work on the Goodman Theatre's real-time, online 'Live' series (*The Sound Inside*, *Ohio State Murders*, and *I Hate It Here*) and an immersive 360° production of *The Wild Party* at the Denver Center for the Performing Arts featured in American Theatre Magazine. Jason was also the recipient of the 2019 Michael Maggio Emerging Designer Award which recognizes emerging theatrical designers within the Chicago area. He is a proud member of The Association for Lighting Production and Design and is represented by The Gersh Agency. jasonlynch.com

CASTING, PAT McCORKIE, (C.S.A.), KATJA ZAROIINSKI, (C.S.A.), McCORKIE CASTING LTD McCorkle Casting, Ltd. has handled hundreds of projects in film, television and theater. Founded in 1979 by Pat McCorkle, the company has earned a reputation for energy, creativity, and the keen ability to translate a director's vision into reality. Having cast everything from Hollywood mega-productions to small regional theaters, McCorkle and her staff have developed a vast talent network extending from working stage actors to superstars. The company has also developed a name for bold and unexpected ideas and for the discovery of new talent. Several of McCorkle cast members have garnered SAG, ACE, Tony, and Emmy awards/nominations. A few highlights of McCorkle's track record include an Emmy nomination for "Californication", Linda Hunt's Oscar-winning role in *The Year of Living Dangerously*; the pool of undiscovered young actors - Ben Affleck, Matt Damon, Brendan Fraser, and Chris O'Donnell - selected for Stanley Jaffe's *School Ties*; and a long list of people who were "tagged" by McCorkle early in their careers, including Holly Hunter, Samuel L. Jackson, Skeet Ulrich, and Calista Flockhart.



A round of applause for City Theatre. And everyone in your audience.

Theater illuminates the human experience. It connects us to each other, brings us closer, and reminds us of the incredible heights we're capable of reaching. So from all of us at Huntington, a big thank you to City Theatre for reminding us how brightly we all can shine.



Member FDIC. ®, ®, and Huntington. Welcome.® are federally registered service marks of Huntington Bancshares Incorporated. ©2022 Huntington Bancshares Incorporated.

WHO'S WHO



TWI McCALLUM (Sound Design) is a Baltimore-raised sound designer, thrilled to make her City Theatre Company debut as her last production and retirement from sound design. Some of her favorite credits include *Chicken & Biscuits* (Broadway), *Frankenstein* (Kansas City Rep), *The Sound of Music* (Dallas Theater Center), and *Kim's Convenience* (Westport Country Playhouse). When not working, she loves taking care of her goldendoodle, playing zombie video games, and learning new gadget skills like 3D printers and metal cutting. She is thankful to Monteze Freeland for being a fantastic director and role model.



SAMUEL G.C. MUÑOZ (Fight Choreographer) is an actor/creator, movement/fight director, motion capture/stunt coordinator, producer, director, voiceover artist, and educator. His craft has been seen in Kenneth Branagh's *THOR*, Clint Eastwood's *Invictus*, Off Broadway, Tony Award winning Chicago Shakespeare Theater, Jeff Citation award winning Defiant Theatre, Second City Skybox, Improv Olympic, About Face Theatre, Chicago's Storefront Theatre, Pittsburgh Playhouse, City Theatre, Virginia Shakespeare Festival, Hulu, Amazon Prime, Cinemax, and film festivals. Muñoz is co-creator of *2Households 2Assholes: Shakespeare's R&J* – rave reviews in *New York Times* & *BackStage* 'Critics Pick'. He's a Certified Teacher in The

Society of American Fight Directors, a tenured Associate Professor in Point Park University's Conservatory of Performing Arts. Samuel is married to the love of his life, Jordan Maya, and father to the sweet loves of his life, Ciel Calypso & Cousteau Calais.



TOMÉ COUSIN (Intimacy Coordinator / Choreographer) Theatrical Intimacy Educators T.I.E., certification with Intimacy Coordinators of Color I.C.O.C. For Netflix: *The Pale Blue Eye*, *Rustin*. Billy Porter's directorial debut *What If?*. Carnegie Mellon University: *Everybody*. Pittsburgh Playhouse: *Little Children Dream of God*, *Angels in America*.



CLARE DROBOT (Co-Artistic Director) first joined the staff at City Theatre in 2015 serving as the Director of New Play Development and Associate Artistic Director. A dramaturg, playwright, and producer Clare has worked in various capacities at Premiere Stages at Kean University, Laura Stanczyk Casting, Williamstown Theatre Festival, The McCarter Theatre, Play Penn, and New Dramatists. Her work as a writer has been seen in Ars Nova's ANT FEST and the New Hazlett Theatre's CSA Series among others. She serves on the boards of the National New Play Network and Brew House Association and is part of the

Leadership Pittsburgh XXXVIII cohort. She is a Carnegie Mellon graduate with degrees in music composition and creative writing, and a member of LMMA.



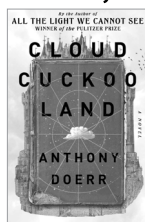
Ten
Evenings

Pittsburgh Arts & Lectures

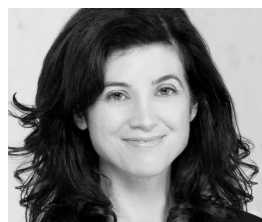
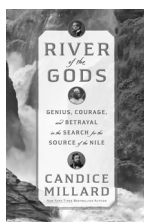
2022/23

Anthony Doerr OCT 3, 2022

Author photo: Deborah Harder



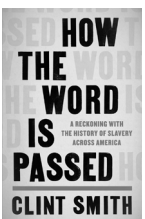
Candice Millard OCT 24, 2022



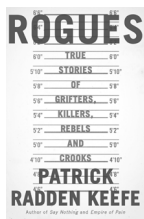
Author photo: Paul Versilis

Clint Smith NOV 7, 2022

Author photo: Calvin Gavron



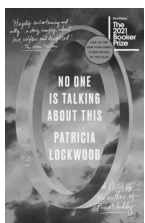
Patrick Radden Keefe DEC 12, 2022



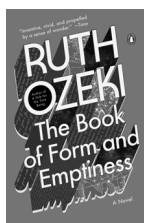
Author photo: Philip Montgomery

Patricia Lockwood FEB 20, 2023

Author photo: Grep Hoax



Ruth Ozeki MAR 13, 2023



Author photo: Danielle Tait

Joy Harjo MAR 27, 2023

Author photo: Makia Whitbur

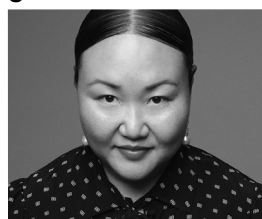
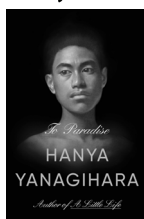


Hanif Abdurraqib APR 17, 2023



Author photo: Kate Sweeney

Hanya Yanagihara MAY 8, 2023



Author photo: Amanda Demme

Monday nights, 7:30 pm
Carnegie Music Hall, Oakland

In person and virtual!
Links to watch the livestream will be emailed
to all ticketholders and viewable for one week.

Single tickets available at pittsburghlectures.org
For subscriptions call 412-622-8866

WHO'S WHO



JAMES McNEEL (Managing Director) joined City Theatre as its Managing Director in January 2015 and has overseen the organization through a period of extraordinary change and transformation, while becoming a trusted and recognized leader in the arts management field both locally and nationally. He came to Pittsburgh after four seasons in the same role at the Contemporary American Theater Festival in Shepherdstown, West Virginia, where he was integral in the development and production of 20 new plays (including 10 world premieres and four commissions). Previously, he served as Literature Specialist at the National Endowment for

the Arts, focusing on grants to nonprofit presses, magazines, and literary organizations, as well as awards to individual poets, writers, and literary translators. While at the NEA he also worked on the development of such national initiatives as Operation Homecoming, Shakespeare in American Communities, Poetry Out Loud, and the National Book Festival. In 2005, James moved to New York City where he was General Manager and project consultant for the arts management firm, The Center for Creative Resources. At the Center, he worked with numerous individual artists and arts organization in all facets of institutional development and was a team leader in the feasibility study, opening, and first year management and operation of The Times Center, owned by The New York Times Company and designed by Renzo Piano. In addition, he was Director of Development and Marketing at the historic Cherry Lane Theatre, located in Greenwich Village. James holds a B.A. degree from Shepherd University and studied Arts Management in the Master of Arts program at American University. He currently serves on the boards and/or committees of the South Side Chamber of Commerce; National New Play Network (finance); Greater Pittsburgh Arts Council (advocacy); and the League of Resident Theaters (LORT), the largest association of its kind in the country. He chairs a consortium of over 25 different venues and organizations, organized by GPAC, that has met monthly in response to Covid-19.



MARC MASTERSON (Co-Artistic Director) has been a leader in the American Theatre for over 35 years with a demonstrated track record of artistic accomplishment, civic engagement, and organizational development. He previously served as Artistic Director of City Theatre for 20 years and helped to build the organization and its current facilities on the South Side. In a distinguished career he has commissioned and developed over 100 world premieres including Pulitzer finalists, Broadway and Off-Broadway successes and notable works in the American theatre canon including *A Doll's House, Part 2* by Lucas Hnath, *The*

Parisian Woman by Beau Willimon, *Vietgone* by Qui Nguyen, *Mr. Wolf* by Rajiv Joseph and *Office Hour* by Julia Cho. More than 50% of the new plays he has produced were written by women. Previously, he served as Artistic Director of South Coast Repertory in California where he conceived and launched two major initiatives for diverse voices in the American theatre, the CrossRoads commissioning program and the Dialogos bi-lingual site-specific project. He served for 11 years as artistic director of Actors Theatre of Louisville where he produced more than 200 productions and the Humana Festival of New American Plays. Plays directed at the Humana Festival include works by Charles Mee, Wendell Berry, Craig Wright, Eric Coble, Adam Bock, Gina Gionfriddo, Melanie Marnich, and Rick Dresser. Recent directing credits include *Shakespeare in Love, All the Way, Going to a Place where you Already Are, Zealot, Death of a Salesman, Eurydice and Elemeno Pea* at SCR; *Cry It Out* at Dorset Theatre Festival; *Hand to God* at the Alliance Theatre; *Byhalia, Mississippi* by Evan Linder at the Contemporary American Theatre Festival; *As You Like It* for the Houston Shakespeare Festival; and *The Kite Runner* at Actors Theatre of Louisville and the Cleveland Play House. He is thrilled to back home in Pittsburgh with many friends and some of the best audiences in the world.

SPECIAL THANKS

Opening Night Reception
Underwritten by the
Scott K. Noxon Family Foundation

Larry Finizio and Team at Breadworks
Janoski's Farm and Greenhouse
Mara Sarraio and friends at Giant Eagle
James and friends at Carson Street Deli

Allegro Hearth Bakery
Community Kitchen

City Theatre's Vision, Mission, Core Values

Mission:


To provide an artistic home for the development and production of contemporary plays that engage and challenge a diverse audience.


Vision:

To be the finest mid-sized theater in America.

Core Values:

Community | Collaboration | Equity, Diversity, Inclusion & Accessibility | Creativity

 City Theatre receives state arts funding support through a grant from the Pennsylvania Council on the Arts, a state agency funded by the Commonwealth of Pennsylvania and the National Endowment for the Arts, a federal agency.

 The Allegheny Regional Asset District, a county agency created to support and finance regional assets, including libraries, parks, cultural groups, sports, and civic facilities, and to distribute tax relief to the 128 municipalities of Allegheny County.

 Actors marked with * and the Stage Manager in this production are members of Actors' Equity Association, the union of professional Actors and Stage Managers in the United States

 The scenic, costume, lighting, and sound designers in LORT Theatres are represented by the United Scenic Artists, Local USA-829 of the IATSE.

 The Director is a member of the Stage Directors and Choreographers Society, Inc., an independent national labor union.

City Theatre is a constituent of Theatre Communications Group (TCG), the national organization for the American theatre. City Theatre operates under an agreement between the League of Resident Theatres and Actors' Equity Association, the Union of Professional Actors and Stage Managers in the United States.



Each season, we go on a journey. You take a chance on plays you've never seen before, often by playwrights you might not know. Our pledge to you is that we scour the country for the very best work possible—plays that speak truthfully, passionately, and urgently (and, of course, entertainingly) about the here and now. New plays are risky, but they're filled with the excitement of the unknown, too. **City Theatre is deeply grateful to our community** for helping to sustain our theatre year after year. **Donors acknowledged here made gifts between July 1, 2021 - August 31, 2022.** Every effort has been made to accurately record and acknowledge all donors. If your name is listed incorrectly, please contact Dianne Duursma at 412.431.4400 ext. 278 or dduursma@citytheatrecompany.

CITY THEATRE CIRCLE (\$15,000+)

David Betts & Anne Mundell
Tonja & Alex Condron
Norbert J. Connors, Jr. &
Janet Rogala
Arthur J. and Betty F. Diskin
Family Cultural Endowment
Fund
Charisse R. Lille
Dr. Marsha (Hisani) Lillie-Blanton
Marcia Morton &
†Thomas Morton
Kemp Powers
Hayes & Patricia Stover

PLAYWRIGHTS CIRCLE (\$10,000 - \$14,999)

Carol R. Brown
Tacy M. Byham, PhD
Judy & Michael Cheteyan
Educational and Charitable
Foundation
Brian J. Gross
Walter Limbach Family Fund
Celine & Paul O'Neill
Barbara A. Rudiak, PhD
Frederick W. Steinberg
The Estate of Robert E. Williams

DIRECTORS CIRCLE (\$5,000-\$9,999)

Dr. Kerry Bron & Mr. Robert C.
Levin
Cooper-Siegel Family Foundation
David Lesko
Ann Black Masterson
Scott K. Noxon Foundation
Sandra & Jeffrey Solomon
Nancy D. Washington, PhD
David Zeve

NEW PLAY CIRCLE (\$3,000-\$4,999)

Russell & Kathy Ayers
Leslie & K. Scott Baker
Dianne & Steve Carpenter
Dianne & Ron Duursma
Catherine & Kenneth A. Glick, MD
Jean Anne Hattler, PhD
Dr. Richard Kasdan
Michelle McCreery, Esq.
James McNeel
Dee Jay Oshry & Bart Rack
Mark R. Power
K. Oliver Rea
The Family of Mindy &
Zal Sanjana
John C. Schlotterer
Susan & Peter Smerd
Tamara Tunie
Catherine & Deepak Wadhvani
Francis M. Vitale

CENTER STAGE (\$1,000-\$2,999)

Joseph Ambrose & Eliza Swann
Dr. Andrew R. Blair
The Burke Family
Annette Calgaro &
Terrance Lewis
Bahar Bazmi Campbell &
Dean Campbell
Nancy & Stanley Cieslak
Family Foundation
Tomé Cousin
Jamini Vincent Davies
Irving and Aaronel deRoy Gruber
Foundation
Laura M. Deger

Edwin and Kathryn Clarke
Family Foundation
Emily Ernst
Tony & Annette Ferrieri
Laryn & Moses Finder
Mark F. Flaherty &
Mary McKinney Flaherty
Joseph & Kathleen Fox
Holly Hatcher Frazier &
Evan Frazier
Matthew J. Galando
Sharon & James Goldberg
Donna Harsch &
George Lowenstein
Janice Harrison
Rhoda & David Hartmann
Linda & Brian Heery
James & Jean Higgins
Mary Ellen Johnson
Susan & Greg Kaminski
Dolores Kara
Arthur J. Kerr, Jr.
Joseph Koscinski
Dr. Erin Lopata
Patrick & Alice Loughney
Mary C. McCormick
Pam & Ken McCrory
Anne & Thomas Medsger
Karen & Richard Miller
Susan & James Morris
Laurie Moser & Stewart Barmen
Eileen & John Olmsted
Stuart Olmsted &
Sharon Achilles
Mark T. Phillis
The Thomas J. Phillis Family
Richard Pietroski & Susan Stuart
Lauren & Daniel Resnick
Chela Sanchez & Kyle Haden
Richard Scheines, PhD &
Martha Harty, PhD

DONOR RECOGNITION

Patricia Schroder
Dr. & Mrs. Gary Schurman
Kristi Rogers & Jody R. Schurman
Richard & Linda Shaw
Stuart Sheppard
Preston & Annette Shimer
Lee & Myrna Silverman
Thomas & Deborah Stackrow
M. Ellen Tarpey & John Battaglia
Mary Lou & John Terrieri
Janet & Chuck Vukotich
Nancy F. & Michael Weissman
Philanthropic Fund
Bruce & Barbara Wiegand
Arlene Carbone-Wiley &
Dr. Clayton Wiley, MD
Woffington Pittsburgh Theaters
Fund

SPOTLIGHT (\$250-\$999)

Donors who wish to remain
Anonymous (6)
Judith Adelson
Viviana Altieri & Tayfun Gol
Janice Anderson
Laura Arnold, MD &
George Arnold
Lindsay Austin
Tom & Erin Baker
Nancy & Sean Barrett
Beth & Keith Battaline
Raymond N. Baum
Edwin H. Beachler, III
N. Beaumont Beard
Benedek Family Fund
William & Vivian Benter
Richard Berg
Daniel Berger &
Sandra El-Hachem
Diane L. Berman
Joyce Berman & Richard Spine
James & Mary Pat Bernauer
Robin Bernstein
Bernadette Bishop-Pirollo
Paul E. Block
Kevin Brewer &
Jose Antonio Licon
Lynette Brooks
Jan F. Bruno
Laurie & Frank Bruns

Stephanie Bucklew
Sandra Budd
William R. Cadwell
Sherry Campbell
Debra Caplan &
David Levenson, MD
Donald Carlson
Sheila & Alvin Catz
Woody & Joanne Chetlin
The Circle-Let 's
Dr. Vicky A. Clark
Janis & Kevin Colbert
Lynn & Alan Colker
Estelle Comay & Bruce Rabin
Amy & Michael Couch
Peter Counihan &
Mary Sheeha Counihan
Betty Cruz
Charles Culbertson &
Nancy Simpronio
Mary Clare & Howard Davidson
Ellen & Gilbert DeBenedetti
Barbara DeRiso & Don Newman
Ruth Deutsch
Jean Dexheimer
Adrienne K. Dickos
Tamara Dudukovich
John A. Dymun
Dolly & Curt Ellenberg
Melissa L. Evans &
Nick Sfakianakis
Mary & Henry Ewalt
Stephanie & Fred Fall
Robert Ferguson &
Elizabeth Evans
Thomas Ferguson & Susan Ryan
Richard Ferro
Paula & Bob Fey
Mark & Holly Fleischer
Anne & Bob Follette
The Honorable Dan &
Debra Frankel
Sarah & Peter Friedman
Robert Friday
Ann & Robert Fronduti, MD
Dr. John & Therese Gallagher
Mary Frances Gargotta
Andrea Geraghty
Ryan Geraghty
Colleen Geyer

William & Margaret Ghrist
Keren Gilboa & Jeremy Holzer
Paul J. Gitnik, Esq.
Shirley H. Golden
Barbara Broff Goldman
Sue W. Golier
Candice A. Gonzalez
Jake Goodman & Sean Shepherd
Dr. & Mrs. Richard L. Green
Elaine Gross
Joyce Candi Grove
Ben Haden & Dianna Ploof
Janice Harrison
Lou & Roger Hasket
Nancy Heastings
Dr. & Mrs. Fred P. Heidenreich
Alan Helgerman &
Sandra Lapietra
Louise Herrle & Godfrey Molyneux
Donna Hoffman & Richard Dum
Thomas H. Hollander
Bettyanne & Jim Huntington
Robert N. Isacke, Jr. &
Bonnie Isacke, PhD
Janis & Jonas Johnson
Mary Ellen Johnson
Dolores Kara
S & J Karas Fund
Donna Hansen & Ralph Kemp
Arthur J. Kerr, Jr.
James Kincaid &
Nita Motts Kincaid
David Klahr & Pamela Weiss
Laurie Klatscher & Greg Lehane
Gloria Kleiman
Kathy Kohan
Roberta & David Konefal-Shaer
The Estate of Bernard Latterman
Larry P. Leahy, DMD &
John Van de Griff
Ellie & Shelly Levine
Elsa Limbach
Katherine & H. Lewis Lobdell
Dr. Paul & Dawn Lorincy
Charlotte & Randy Lott
Patrick & Lea Ann Lope
Janet Lunde
Louise & Michael Malakoff
Beth Marcello & John Rodella
Carolyn Mariano

Janet R. Markel
Demetria & Brien Marsh
Earla Marshall
Joan & Charles Marsteller
Caitlin Green & Drew Martorella
Linda Mauro
Sheila McKenna
Ann M. McHoes & Bob Kleinman
J. Kevin & Kristen McMahon
John McSorley, MD
Marilyn Meltzer
Nancy W. Merenstein
Barbara Miller
Betty Minnotte
Sophia & Eduardo Monsour
Gary Mosso
Terrence H. Murphy
Shannon Musgrave
Janice L. Myers-Newbury
Carol & Richard Nathenson
Elinor Nathanson & Peter Kogan
Torey Naylor & Richard Beuke
Gail K. Neustadt
Carol Nichols
Sarah Nilson
Terry O'Reilly
C. Prentiss & Lulu Orr
Dr. William Otto
Reshma Paranjpe, MD
Cori & Dax Parise
Michael Parkinson
Richard Parsakian
Louise & John Pavia
Jennifer Pesci-Kelly &
Richard Kelly
Laurie A. Phythyon
Rita & David Pollock
Courtney & Neil Rabi
Stephen G. Robinson
Andrew M. Roman
Sally & Ned Ruffin
Debra & Donald Salvin
Richard Sandow & Francine Rose
Marty Santalucia
Karen L. Scansaroli
Joan Scheinholtz
Karen & George Schnakenberg
Diane Schneider & Nancy Foley
Sue & Walter Schneider
Marnie Schock

Sara & Ken Segel
Sam Simone & Helena Ruoti
Stephen Skinner
Mary & Thomas Smolinski
Jean & Jack Snodgrass
Henry Snyder
Robert CT Steele &
Tony Hernandez
Mona & EJ Strassburger
Gene L. Svrcek
Irene & David Tabish
Karin & Ron Talerico
Jane & Ron Thompson
Judy & Tom Thompson
Dr. Edward T. Tomlinson &
Dr. Carol Wooten
Hilary Tyson & Charles Porter
Kellee Van Aken &
Saul Straussman
Bria Walker
Iris Amper Walker &
Les Dukehart
Janice Wanke
Mark Weber
Melanie & Steven Weisbord
Ken Werner & Lynn Swanson
David Westrick
Judith & Willard White
George & Patricia Williams
Jon Withrow
Stephen M. Wolfe
Thomas Wyse & Robert Neft
Jane Yanosick
The Estate of Dr. Samuel A.
Yousem

FRONT ROW (\$100-\$249)

Donors who wish to remain
Anonymous (11)
Carolyn Hess Abraham
Sharon & Robert Abraham
Deborah Adams & Joseph Ravoira
Dulcie Sylvia Affleck
Jean & Michael Alexander
Joel D. Ambrose
Bonnie Anderson
The Estate of Marcella Apter
Linda Argote & Dennis Epple
The Estate of Jane C. Arkus

Wendy Arons & Michael Perdriel
Jay Aronson
Ronna & C. Daniel Askin
Teresa Babyak
Lydia Balogh
Elizabeth Barker
Ulrike & Guy Battestilli
Bahar Bazmi
Alison Beam
Vernon Bebout
Dana & Martin Beck
Dr. Marya Bednerik
Coreen Begg
Sandi & Peter Behrens
Dolly Bellhouse
David & Sharon Bellotti
Laura Benninger
Lori Benson & Jay Kuntz
Richard Berg
Susan Beringer
Rosemarie Berman
Patti & Sandy Berman
Prof. Jane Bernstein
Nancy Bernstein &
Dr. Robert Schoen
Betensky-Kraut Family Fund
Ron Bianchetti
Tsiona & Alan Blitstein
Jane & Richard Block
Jillian & Robert Boldin
Pamela Bolkovac
Susan Bonello
Nicholas Bonesso &
Kendra McLaughlin
Kyle Bostian & Tiffany Wilhelm
Donna Bour
Bear Brandegeee &
Dr. Nir Kossovsky
Jill Brethauer
David Brockway
Linda Brown
Sharon & Ken Brown
Virginia A. Broz
Michael & Sakina Brunk
Marilyn & Howard Bruschi
Erica Brusselars
Gail & John Buchanan
Allison Cahill
Steve & Sal Caito
Patricia Calabro

DONOR RECOGNITION

Cheryle E. Campbell
Yvonne Campos
Patrick Cannon
Christopher Capato
Julia & Andrew Carlson
Barbara & Bruce Carney
Paula Casasent
Christine & Peter Casillo
Joan & Howard Charlson
Mark Cieslewicz
Dr. Vicky A. Clark
Madelin G. Clements
Tim Cline
Colleen & Tom Cocchi
Rosemary K. Coffey
Sharleen Cohen
Susan & William Cohen
Colleen & Michael Colarusso
Lynne & Alan Colker
Rachel & Gregory Colker
Katherine Colville
Kasey Connors
Arlene & Troy Cook
Gabrielle Corson
Sharon & Jere Cowden
Dr. Brett Ashley Crawford
Dr. Charles Cullen
Rebecca Culyba & Barry Ries
Lloyd Cunningham
Richard Currie
Dona Curti & Alex Hauptmann
Joe D 'Alessandro
Michele D 'Angelo
Jo DeBolt
Anthony DeCaria
Nick & Judy DeGregorio
Claire DeMarco
Charles Denk
Suzanne DeWalt
Adrienne K. Dickos
Teodora & Bruce Dietrich
Prof. Sharon Dilworth &
Dr. David Baker
Ave Maria Dlubak
Steven Doerfler
John & LouAnne Dolphin
Maxwell Dormer
Reginald L. Douglas
Samuel & Judith Douglass
Kathleen Downey

Dr. Rita G. Drapkin
Merel Elisabeth Duursma
Tricia & Brian Eccher
Ami & Nurit Elis
Marlene H. Ellis
Rachael Ellis
Frederique & Adam Ennis
Paul Epstein & Rita Ray
Kristin Erickson
Deborah Eutsler
Susan & William Evans
Peggy Lynn Ferber
Marian Finegold
Lauri Fink & Mike Gable
Ellen M. Fisher
Stephanie Flom
Katherine Flood, MD
Leland Floyd
Elise Ford
Nancy Frankel-Zacchero
Eric & Regina Frey
Erika Fricke
Michael Friedrich
Dana Frishkorn
Molly Frounfelter &
Jeremy Michalek
Margaret H. Fuhrman
Sarah Gaffen
Suzanne & Edward Galando
Thomas & Terri Galante
Drs. John & Therese Gallagher
Kathleen Gallagher
Mark Gasparovic
Sharon Gaus
Alice V. Gelormino
Barbara Gengler &
Randy Weinberg
Charlotte George
Andrea Geraghty
Ryan Geraghty
Marcie Gerson
Carrie Giest
Caren Giotfelty
Anita & Robert Gold
Carol & Robert Gomola
Deborah Gordon
Pamela Grabowski
Gail Lynne Gratton
Brian M. Gray
Meredith A. Gray

Arnie & Kathie Green
Kathleen & Christopher Green
Barbara & David Greenberg
Marvin & Lynne Gross
Susie & Don Gross
Alfred & Arlene Grubbs
Norton Gusk
Lana Guttman
Barbara Hack
Ellie Jeffers Hall
Jo Ann Haller
Joel Harris & Nancy Hoffman
Tracy Hawkins
Lizz & Eric Helmsen
Dara & John Henne
Mary-Jo & Michael Hennessy
Evonne & Michael Henry
Louise Herrle & Godfrey Molyneux
Judith & David Herzog
Alice & Martin Hickey
James Hieber
Janet Hilderbrand
Mary Ellen & Paul Hilko
Rebecca Himberger
Velma & Stuart Hirsch
Robert Hoehl
Margie & Gary Hoffman
John D. Houston, II
Daisy Jeffries
Dr. Deborah Landen &
Dr. Carl Johnson
Dr. Barbara Johnstone
R. Juneau
Nancy Junker
Dr. Susan Deakin Kabazie
Sheree Kaiser
Carolyn & Randy Kakoff
Robert & Vicky Kamin
Peter Kaplan
Carolyn & Randy Kakoff
Katherine & Jon Karraker
Rebecca Kasavich
Moisés Kaufman
Michele Kearney
Kathy & Reverend David Keller
Peggi Kelley
Emma Kelly
Gail Lynne Kelly
Patricia Ward Kelly
Brian Kerr

Michele Kerr
Louise Ketchum & Eve Goodman
James Kincaid &
Nita Motts Kincaid
Alex Kintz Konegger
Stefi Kirschner & Gil Schneider
John Kocur
Joni Kristo
Betty & Bob Kripp
Emily Krull
Patricia & John Kudlac
Karen Dorey Kuhar
Carol Hochman & William Lafe
Rick & Ann Landesberg
Elizabeth Lang & Steve Shapiro
Susan & David Laurent
Dr. Judith R. Lave
Prof. Hazel Carr Leroy
Rita Levine
Prof. Diane Litman &
Dr. Mark Kahrs
Judith & James Longo
Annie Loub
Mary Ann & John Lovasz
Carol & Paul Love
Marcia Luek
Janet Lunde
Margaret MacCall
Eric MacDonald
Livia Macedo
Nanci Maguire
Andrea & Glenn Mahone
Denise Maiden
Robert & Dow Malnati
Virginia Mance
Jason & Beverly Manne
David March & Randall Kesterson
Ellen & Lewis March
Kathleen Marks
Elisa Recht Marlin
Brien & Demetria Marsh
Aretha Marshall
Dan J. Martin & Cheryl Pinto
William Mason
Jeffrey & Linda Mates
Bill Maurer & Carol Jean McKenzie
Linda Mauro
Hadassah Max
David D. Maxwell
Emily Mayo

Margaret MacCall
Janet McCall
Kathleen McCann
Margot & Clyde McClellan
Maureen & Ron McCollum
Tricia & James McCormick
Susan McCoy
L.E. McCullough
Mark A. McDonald
Gale McGloin
Brian & Sandra McInerney
Shirley McIntyre
Jan McKeag
Kendra McLaughlin
Anne & Thomas Medsger
Nancy & Joel Merenstein
Tracy & Karen Merrick
Lauren Meyer
Christina & David Michelmores
Carol F. Miller
Linda & Richard Miller
Richard Milstein
Becky Minich
Robert & Christine Misback
Eugene Modic & Adele White
Niveditha Mohan
Vickie & Chris Motz
Barb & Jim Moyer
Dana Mueller
Amy Myers
Helen Naimark
Yvette Nelson
Julia Nesbitt
Fed Noel & Rick Fredin
Molly Northup Bloom
Alison & Paul Oehler
Andrew David Ostrowski
Shelly Pagac
Sunwoo Park
Jo Ellen Parker & Rick Mansa
Ronnie Parker & Melisa Saul
Scott & Kate Parker
Dr. Minaxi Patel
Kimberly Patterson &
Dena Hofkosh
Richard Pattis & Ellen Olshansky
Sigmund Pehel
Brian Peiritsch
Cynthia Pennington &
Christopher Donohue

Rodney Permigiani &
Nancy Pulsifer
Cynthia J. Picone
Rita & Daniel Poljak
David & Marilyn Posner
Neil & Courtney Rabi
Mason Radkoff
Jocelyn Ralutz
Jessie Ramey & John Zimmerman
Catherine Raphael
Allison Reddick
Adeline Rennekamp
Lynn Ribar
Rebecca Ridgeway
Jan Grimes Ripper & Doug Ripper
Kelsey Ripper & Mike Zimmerman
Harriette & Ronald Roadman
Judy & Timothy Robison
Judith Roscow
Sandra & Gerald Rosenfeld
Susan J. Rossetti &
Curtis Woodhead
Cynthia Ross-Katz
Mona D. Rush
Jill Russell
Carmella Salem
Merryl & Marc Samuels
Lisa Scales
Dianne & Louis Scansaroli
Mathew Schaefer
Evan Schapiro
C. Scheftic
Jennifer & Scott Schmidt
Robert Schurko
Rose Scilla
Kathy Scrabis
Pauline R. Semans
Sister Joyce Serratore
Karl Shaffer
Dr. Anne Shaheen
Mabel Jeanette Shaner
Elizabeth Shannon
Maureen Shannon
Steve Shapiro
Mary Ellen Shea
John Shepard & Barbara Mings
Scott & Kerry Shiller
Hazel Shockey
Barbara & Larry Shuman
Mary Lisa Siegel

DONOR RECOGNITION

Rhoda Sikov
Larry Silverman
Larry Simms
Noel Slater
Kathleen Slencak
Cotter Smith
Linda Pell & Lindsey Smith
Lisanne Smith
Todd Smith
Dr. Thelma Snyder
David Sogg & Lisa Parker
Marcia & Mel Solomon
James & Mary Lou Southwood
Elizabeth & Jonathan Spatz
Stuart & Mary Staley
Shyrl Stange
Jeremy Stangl-Richardson
Robert & Mary Stanutz
Richard & Lauren Stern
Ruth Still
Joyce Stuber
Alison & Neil Styler
Harmony Sullivan &
Justin Cummings
Martha B. Summerfield
Irene Surmik
Peter & Daralynne Swartwout
Mary Ann Stuart Templeton
Kathleen & Louis Testoni
Mary C. Thomas
Drs. Donna & Michael Tranovich
John Trupiano
Nancy & Gary Tuckfelt
Barbara & Malik Tunador
Marilyn & Joseph Turner
Catherine Meyers Tyson
Thomas Valenza
Malachi Walker
Jody Clarke Walter &
Edward H. Walter
Dorothy L. Washington
Shirley & James Weber
Elizabeth & James Webster
Colleen Wedler
Kim Weild
Patricia M. Weiss
Evalynn Welling
Harry & Barbara Wenkert
Susan & Ray Werner
Alexandra West

Judge R. Stanton Wettick, Jr. &
Nancy Hazlett
Mary Widom
Joyce & Wayne Wiester
Nichole & Travis Williams
Helen F. Wingertzahn
Miriam & Stanley Winikoff
Alma Wisniewski
Kyle & Katie Wolfe
Sister Rita Yeasted
Gregory Youman

FRIENDS (UP TO \$99)

Edith Abeyta
Becca Ackner
Bruce & Jean Adams
Deborah Adams &
Joseph Ravoir
Keith Adams
Jamie Adibi
Jamie Agnello
Leslie & Elias Aizenman
Feyisola Akintola
Farah Allam
Colin Allen
Ann & Paul Amoroso
Shirley & Stanley Angrist
Jennifer & Joshuya Anhalt
Mary & Ken Antol
Yuta Aoki
Ketih A
Victor Aponte
Gerald Aquin & Terri Denmom
Susan Ardison & Joseph Decker
Alexis Argyros
Molly Mae Arthur
Keith Armstrong
Robin Armstrong
Andy Arnold
Molly Mae Arthur
Laura Assade
Mark Aul
Michael Aulick
Lindsay Austin
Cheryl Avicelli
Sharon Axelrod
Kathryn Ayars
Stephen Ayraud
Jerad Bachar

James & Bonnie Bacik
Ronald & Nancy Baime
Carol Baker
Emily Balawejder
Bruce & Patricia Bancroft
Beverly J Banovatz
Steven Barilla
Elizabeth Barker
Mary Barkman
Laura J. Barry
Sophie Batchelor
Nikki Battestilli
Eileen & Arthur Batson
Cindy Bayer
Ellen Baxter
Donna J. Bauman
Joyce Bauman
Barbara Baumann &
Howard Aizenstein
Jane & Matthew Baumer
Ellen Baxter
Cindy Bayer
Elaine & Adam Becker
Nancy & Alan Bedell
Coreen Begg
Mark Beighey
Terri Bell
Andrew Bellesis
Carol Bengston
Rick Bennett
Samantha Bennett
Wendy Bennett
Joan & Keith Bernard
Thomas Bakaitus, Jr. &
Elizabeth Bershok-Bakaitus
Denise Bertetto
Francis Bertonaschi
Robert Beruh
John Bettis, III
Katherine Wilkins Bienkowski
Alison Bigler
Robert Binkin
Margo & Mark Blasiak
David Blaushild
Tsonia & Alan Blitstein
Penny Bloom
Nena Boax
Erik Bodow
Meghan Bolock
Kenneth J. Bolden

Alyson Bonavoqlia &
George Wittenberg
Shannon Book
Adam N. Boone
Christina Bordini
Lisa Borghesi
Michele Borkoski
Holly Borland
Deborah & James Boughner
Charet Bolton
Robert Bowman &
Barbara Labbie-Bowman
Keith & Rosemary Boyce
Robyn & Sean Brady
Dr. Joshua Breslau
Claudia & Glenn Broman
Erin Brooks
Elizabeth Brown
Kelly Brown
Lucille Brown & Rochelle Rosen
Mark Brown
Stephanie & Peter Brown
Theresa Brown &
Arthur Kosowsky
Nicholas Browne
Chad Brubaker
Michael & Sakina Brunk
David Brzozowski
Sandra Budd
Barbara Bugosh
Morgan Bullard
Rosemary Bunker
Edward Bureau
William A. Burgunder, Jr.
Lisa Burke
Samuel Burns
Kwame Burroughs
Robert Burrows
Heather & Gary Burtch
Savannah Butler
Eric Buzard
Mary Ellen Byers
Michael Byrne
Dione Cahillane
Sandra Calgaro
Terry Calloway & Jerry Burden
Megan Campbell &
Mary Serapiglia
Sara Campbell
Naomi Canella

Edward & Margaret Cannon
William Cameron
Frank Carbone
Paula & Marco Cardamone
Michael Carelli
Tim Carr
Judy Caric
Gina Carl
Tim Carr
Anthony F. Carrington
Robin Carson
Kathy Catalano
Daniel Catanzaro &
Craig McDonald
Laura Cathey Lubinski
Laura Caton
Rachel Cawley
Charles Ceccarelli
Susan Cercone
Joshua Chamberlain
Kristopher Chandler
Joan & Howard Chandler
Aurelia Cheng
Kristy Cherry
Richard Chesnik
Denise L. Childs
Mary Lou Christie
Ariel Cianfarano
Judith K. Ciesielski
Ann Cipriani
Deborah Clark
Michele & Garth Clarke
Sigrid & Wilfred Cleland
Joan Cities
Donna Click
Katy Click
Jean Clickner & Jon Pushinsky
Joan Clites
Collee & Tom Cocchi
Diane Cohen
Trudy Cohn
Theresa Colecchia
Robert Collins
Robin Connors
Rene Conrad
Michelle Rone Cooper
Barbara Cornibe
Eryn Correa
Cary Coughlin
Anne Countouris

Carol Couvrette
Mary Cox & Bridget Quinlan
Mary Coyne
Patricia Coyne
Dr. Nancy Crago
Emeline Crawford
Ann Criss
Elizabeth Crittenden
Rebecca Crivelli
Christine Cronewett
Amy Crosson
Leilani Cudal
Steve Cuden
Mark W. Culleton
Alison Culyba
Lloyd Cunningham
Mary Pat Curran
Jeffrey Curry
Barbara J. Cush
Marija G. Cutlip
Frances Czak
Joyce Dambaugh
Kathleen Dancho
Danielle D 'Andrea
Joyce Dambaugh
Laura Daniels
Suzanne & Richard Danks
Prof. April Daras
Diane Davis
Julie Davis
Lisa Davis
Susan Davis
Michelle Dawley
Michele de la Reza &
Peter J. Kope
Pearl Deaniello
Arnold DeCarolis
Amelia DeChicchis
Laura Dedi
Alma DeLucia
Rocklynn & Edward DeMarco
Rob DePasquale
Louise DeRiso
Jacqueline Deshpande
Caroline DeWalt
Jose Diaz
Alicia DiBacco
Ellen DiBiase

DONOR RECOGNITION

Richard A. Dickson &
Reynald Macadingding
Christine Didio
Allison Diehl
Dawn Diehl
Dallas DiLeo
Peter & Donna Dinardo
Bruce & Lee Dobson
Linda Doernberg
Barbara Doherty
Christine Dolfi
Colleen Donnelly
Alicia Donner
Lynda Donovan
Suzanne Donsky
JoAnn & Lawrence Doran
Esther Dormer
Margot Dormer
Edward Dougherty
Carol Douglas
Lori & Thomas Dowling
Jane A. Downing
Clarence & Leslie Dozier
Donnella Drewery
Joyce Driben
Clare Drobot
Kelly Drum
Nancy Dubensky
Ryan Dumas
Nichole Dwyer
Dr. Catherine L. Eagon
Steven Echenrode
Lisa Edmondson
Tracy & Norman Edmunds
Janet M. Edwards
Linda & Lawrence Ehrlich
Doug Eicher
Margaret Eichner
Darla Ann Eisel
Marilyn Eiss
Paul Eiss & Michal Friedman
Kimberly El-Harris
Thistle Elias
James Elkins
Abraham Elkoni
Lisa Ellis
Denise Englert
Paul Epstein
Amy Erickson
Libby Ernhart

Frank Estes
Bonnie Evans
Thomas C. Faciszewski
Frances & David Fall
Freddie Faraone
Wynne Fedele
Anne Louise Feeny
Eliot Feenstra
Barb Feige
Melissa Fera
Janet Ferguson
Robert Fierst
Dr. Robert Fierstein
Kathi L. Finch
Marian Finegold
Leslie Fink
Paul Fireman
Joan Fiset
Betty Fisher
Elly Fisher
Tami Fitzkoff
Jessica Flamholz
Bill Flanagan & Ann Devlin
Fleece
Dianne Fletcher
Dr. Lee Fogarty
Maureen Ford
David Foreman & Carrie Bessor
Lisa & Michael Forgas
Dave Forman
Emily Forney
Anne Forrest
Molly Forrest
Mary Fortuna
Elizabeth Foster-Shaner
Linda Fowler
Roseanne Fowler
Alison Francis
Kimberly Francis
Lynne & Mark Frank
Helene Friedberg
Erica Friedman
Karen & Jack Friedman
Yael Friedman
Michael Friedrich
Noreen Friel
Corinna Fritsch
Ellen Doyle & Lawrence Frolik
Kathleen Froncek
Jill Furman

Kathleen & Paul Gaberson
Darlene Gaddis
Hallie Galgano
Karen Gallimore
Angeal Garcia
Ruth & James Garrett
Sharon Gaus
Jeanette Geary
Kelsey Geary
Elaine Gelb
Alice V. Gelormino
Devon George
Sarah & William Getty, III
Anthony Giancola
Kathryn L. Gigler
Virginia Giles
Kelly & Edward Gill
Julienne Giuliani
Lisa & Paul Giusti
Sarah Glascom Morris
Courtney Glenn
Stephen Glickman
Susan & James Godwin
Sarah Goeke
Terri Glueck
Gretchen & Ralph Goetz
Timothy Goetze
Sheila Golding
Leslie Goldstein &
Margie Bachman
Elizabeth Gombert
Frank Gomez
Meagen Good & Misti McKeen
Dr. Michael Goodhart &
Dr. Susan Hoppe
Letitia & John Goodman
Roslyn Goorin
Linda & Alan Gordon
Amanda Gracia
Betsy Graf
Emanuela Grama
Deborah Grass
Gail Lynne Gratton
Bill Graves
Heather Gray & Charles Kannair
Dr. Christina Greathouse
Deborah Greene
Jennifer Greenfield
Daina M. Griffith
Susie Gross

Rami Grossberg &
Monica Vandieren
Barbara & Arthur Grossman, MD
Jean & Michael Grossman
Michael Gruber &
Mary Phan-Gruber
Hanna Gruen
Alexandra Gruskos
Robert Grzyb
Natalie Guiler
Lynn & Patrick Gurrentz
Cory Gwin
Daniel Haas
Suzi Hagen
Chuck Half
Zen Hall
Malinda Hallett
Melissa & William Hallett
Judith Hallinen
Beth Ann Halloran
Sarah Hamilton
Susan Hamilton
Kathy Hancock
Janel Hanmer
Suzanne Hannegan
Karen Hannon
Dr. Bushra Haq
Lynda Harasty
Patricia Hargest
Anthony Harper
Kiah Harrington-Wymer
Ann Harris
Mora Harris
Pam & Chris Harris
Shari Harris
Mahnaz & Ross Harrison
Amanda Hartle
Peggy Hasley
Lara Hayhurst
Rebecca Heaton
Joyce Hebda
Marci Heckler
Kathryn Heiser
Shelley & Dean Helfer
Mara S. Hellman
Ken Henderson
Mary Jo & Michael Hennessy
Paul Hensler
Christine Herring
Susan Hersh

Eleanor & Marshall Hershberg
Monica & Adam Hertzman
John Hess & Sharon Beddard
Nicolas Hess
Valerie Hess
Moses Hetfield
Sima Higgins
Ginny Hildebrand
Jeffrey L. Hinds
Rebecca Hof
Tom Hoffman
Pamela Hogans
Shanna Hollich
Lisa Holt
Judith Hoover
Carole & Stephen Hopey
Catherine & Thomas Hornstein
Joan & Ken Horoho
Angelina Horst
Alan Houser & Helene Gordon
Lisa Houser
E. Hovland
Robert Howell
Jeannette Hoy
Yvonne Hudson
Davrian Hunt
Mary Helen Hutchins
Debra Hutchinson
Elizabeth Hutchinson
David Immonen
John & Charlene Ingham
Joy Isaacson
Dr. Carrie Iwema
Joann & Jim Jabour
Jerry Jaffe
Lonnie Jantsch
Frank Jaroneski
Jon & MaryAnn Jarvik
Kay & J. Richard Jennings
Rosemary & Walt Jennings
Kelsie Jepsen
Ammie Jergenson
Marianne Jew
David & Nancy Johnson
C. Denise Johnson
Christine Johnson
David & Nancy Johnson
Diana R. Johnson
Melinda Johnson
Susan Johnson

Ann Johnston
Thomas R. Johnston, Jr.
Catherine Jones
Camille Jonlin
Roberta Jordan
Stephen & Susan Jordan
Tarley Jordan
Patricia Joseph
Daniel Joudrey
Barry Judd
Nancy Junker
Kenneth Kaleida &
Donna Gunther
Moria Kaleida
Robert & Vicky Kamin
Cheryl Kampert
Brandon Kaploe
Joshua Karelitz
Barbara Karp
George C. Kasich
Curtis Katz
David Kaye
Myra Kazanjian &
Maggie Ritchey
Elzbieta Kazmierczak
Maureen Keane
Emily Keebler
Perri Keefe
Robert Keefer
Kristen & Matthew Keller
Janice Kelly
Patti Kelly
Mary Ruth & Ward Kelsey
Bushra Khan
Lisa Kiciekinski
Patty Kicinski
Joann Kiehar
Michelle Kienholz
Laura Kieras
Ellen Kight & Steve Woods
Anna Kijanka
Pam Kilgore
Evelyn King
Alex Kintz Konegger
Jennifer P. Kirk
Mary Lynn & Frederick Kitner
Amy Kline
Michele Klingensmith
Linda Knepper
Lauretta Kobasa

DONOR RECOGNITION

Caitlin Koerber
Eileen Koerber
Lisa & David Koi
Angie Komninos
John E. Komninos
Kaitlyn Konkle
Carolyn Kontos
Drs. Hanita & Ram Kossowsky
Curtis Kovach
Karen Kovach
Michael Kovach
Anne & Paul Kowatch
Elaine & Carol Krasik
Karen Krieger
Mark W. Kromel
John & Patricia Kudlac
Trent Kugler
Kurt & Ellen Kuntz
Adam Kupec
Jane & Christopher Lacey
Elizabeth Lagnese
Heidi & John Lamb
Angela Lamers
Cynthia Lammell
Rebecca Lampert
Karen Landis
Patricia Lane
Jacqueline Lang
Corey W. Lankford
Brandy LaQuatra
Suzette & James Large
Kim Larsen
Roberta Lasto
Margaret Lattanzio
Barbara Lawrence
Valerie & Ronald Lawrence
Adele Lawhead
Jill Leahy
Bobbi Jo & Jeffrey Leber
Gary Lefebvre
William Lefler
Joyce Leifer
Michelle Leive
Elizabeth Lenthe
Kevin Lenzo
Kathleen Leonard
Julie Leslie
Regina Levin
Evelyn Levine

Mary Beth Levrio
Nicholas Lewandowski
Deborah Lewis
Emily Lewis
Julia & Gene Leyarovich
Joan Kidsker
Ron Linden
Patti Lindsey
Leanne & Brad Lisen
Prof. Diane Litman &
Dr. Mark Kahrs
Dr. Lawrence T. Lobl
Oleain Lockhart
Marcia Logan
Meri Long
James & Judith Longo
David & Cheryl Longstreet
Janina Lopez
Lindsey & Edmund LoPresti
Michael & Nancy Loughhead
Jane & Michael Louik
Kimberlee Love & Mike Seate
Ryan Lowe
Patrick Lucas
Robert M. Lucas
Marcia Luek
Dennis Lynch & Barbara Dixon
Cathleen Mack
Christina Mackeith
Donna Macsuga
Meara MacWilliams
Marlene Makstutis
Marc & Jennifer Malandro
Jocelyn Malik & Thomas Link
Greg Manley
David March &
Randall Kesterson
Emily & Kimble Marshall
Kyle Marshall
Clarice Martin
Kristina Martin
Mary Martin
Robert & Debbie Martini
Rick Mary
Alexandra Masterson
Kate Mastronie
Darlene Matey & Francine Matey
Marita Mathews
Patty Matwiczky

Tammy Maue
Kaleigh Mauroni
Linda Maus
Katherine Max
Dr. Louise Mayo
Angela Mazza
Todd McBride
Kathleen McCann
Laurie McCants
Denise McCaskill
Jollie McCarthy
Elaine & William McCausland
Jeanmarie McDermott
Maggie McDermott &
William Bates
Melissa McDonough
Prof. Carey McDougall
Susan McGregor-Laine
Dr. Maureen McHugh
Esther Marie McManus
Sandra McNamee
Nancy McNary-Smith
Dolores McQuaid
Karen & Bill McShane
Elise McVeigh
Kelly Mednis
Linda Megela
Mary Alice Meli
Megan Melichar
Pierre Melin
Terry Melis
Patrick Menanno
Devan Mercurio
Susan & Barry Merenstein
Jill & Steve Merrill
Karen & Brian Merritt
Jane Messmer
Carolyn Metting
Molly Metzler
Larry Meyers
Rachel Meyers
Elizabeth Michael Ross
Christopher Michael
Christine Michaels
Josephine Mchnya
Katherine Mihm
Jeffrey Miller & David McDougal
Audrey Millard
Alexis Miller

Lara Miller
Lisa Miller
Maxine Miller
Miranda Miller
Nanette Miller
Rebecca & Edward Miller
Hattie Miles
Audrey Millard
Alexis K. Miller
Carol F. Miller
Maxine Miller
David Misch
Gemma Mitchell
Robert Mitchell
James & Norlene Mitnick
Mary & William MODOONO
Joseph P. Moffitt
Carol Mohamed
Betsy & Bob Monroe
Prof. Robert Monroe
Bruce Monty
Jamie Moore
Gwendolyn Moorer
Missy Moreno
Antoinette Morgan
Ayisha Morgan-Lee
Veronica Morgan-Lee
Carol Morihlatko
Dustin Morris
Jerome Morris
Michele Morris-Donner
Trudy & Gary Morrison
Mildred E. Morrison
Madison Morrow
Whitney Morse
Margarte Morycz
Therese Moss
Kara Mostowy
Alana Moyer
Nicole Muise-Kielkucki
Greer & Gary Mulholland
Alexandra Mullins
Chelsea Murphree
Dr. Donna M. Murray
Kim Murray
Kimberly Musial
Laura Mustio
Teri Nagel
Edward & Noreen Nalitz
Julie Nangle

Linda Napoleon
Cassandra Narkevic
Mark Nasielski
Cindy Nee
Emily Neff
Luanne Neff
Julia Nesbitt
Harley Nester
Deborah Nichols
Judy Noland
Fred Noel & Rick Fredin
Laura Norris
Jennifer Novelli
Katherine Nowak
Mary Patricia & James Nowalk
Eric & Lourie Nyberg
Allison Oczko
Laura & Daniel O 'Connell
Laurie O 'Connell
Paulette ODonnell
Ashley Offman
Mary Ellen Okeefe
Christine O 'Lare
Stuart Olmsted
Mary Ann Olup
Jennifer Onofray
Colleen Orso
Deirdre C. O 'Rourke
Anna Osselborn
John Robert O 'Toole
Martin O 'Toole
Robert O 'Toole
Paul & Peggy Outon
Amy Overby
Ipek Ozkaya
Micahel Pacillio
Michele Pahnke
Dorothy Packer
Will Page
Richard Pagnotta
Michele Pahnke
Jennifer Palmer
Dyann & Thomas Panepinto
David Pankratz
Amy & Anthony Pardo
Courtney Pardue
Christine Parker
Paulie R. Parker
Anne Parys
Kenneth Pash

Wendy Pashman
Patricia Passeltiner
Irette Patterson
Joanna Patterson
Mark John Patterson
Julian Payne
Rafiq Payne
Brian Peiritsch
Rev. Dr. Victor & Janice Peischl
Nicole Penberg
Kathryn Pepper
Deb & Joe Petak
Emma Peters
Kathy Pettibon
Pia Petola
Joanne Phillips
Douglas Pickens
Kate Pieratt-Webb & Clark Webb
Sharon Pillar
Anthony Pirollo
Suz Pisano
Dr. Ruth D. Pisarcik
Barbara Piskor
Caroline Poirier
Rita & Daniel Poljak
Jeffrey Pollock
Myrna Pollock &
Charles Strotz, III
Anthony Polley
Beth Pomerantz
Shay Port
Kathryn & Jeffrey Powell
Susan Powell
Sandra Preuhs
Virgina F. Pribanic
Ellen & Jeffrey Primis
Walter Prior
Denise & Edward Prochownik
Prof. Denise Pullen
Holly & Dan Pultz
Dr. Richard Purcell
Lynn Purvis-Lund
John Quattrociocchi
Jan Raether
Patricia Raffaele
Dama Railsback
Drs. Obie & Michael Ramsay
Michele Rawson
Tiffany Raymond
Jack Rearick

DONOR RECOGNITION

Karen Reber
Shannon Reed
Kathleen Regan
Carol Reichbaum
Bruce Paul Reik
John E. Reilly
Amy Reiss
Bruce Reissaus
Elizabeth Reitz
Abby Resnick & Roger Day
Cordella Reynolds
Michael Rhodes
Molly Rice
Linda Richard
Leila Richards
Cheryl Richardson
Barbara & Frank Riehle
Carol Rigdon
Agnes Riley
Jo Riley
JoAnn Riley
James Ritchie
Alison Robertson
Deborah J. Robinson
Lynne & James Robinson
Leah Robinson
Danette Rocco
Andrew Rogers
Ken Rom
Jessica Romanias
Caryn Ronis
Gretchen Roos
Francine Rose
William Rose
Deborah Rosen
Marilyn Rosen
Helen Faye Rosenblum
Donna Rosenwasser
Annmarie Rosland
Joyce & Ray Ross
Nancy Ross
Roger Rouse
Dottie Roush
Betty Rowland
Dr. Zarky S. Rudavsky
Robin Ruefle
Carolyn Ruffer
Laura Runnels
Janet Ruperto
Judith Ruszkowski

Jane Rutkowski
Erin Sabatini
Ina G. Sable
Heather Sage
David Saint-Jacques &
Kristen Stephen
David Samuel
Richard Sandow & Francine Rose
Penelope Sayles
Barbara Schaffner Hack
Lisa Schatz
Edward Scheid
Beverly Harris-Schenz &
Michael Schenz
Leslie Scheunemann
Charles & Madeline Schindel
Joyce A. Schlag
Sheryl Schlendorf
Sheila & Ralph Schmeltz
Jeffrey Schmoyer
Ronald & Debra Schneider
Ellie Schoenberger
Carolynn & Paul Schrading
Mary Lou & Andy Schreffler
Phillip Schuller
Elizabeth Schwartz
Alice & David Scott
Lindsay Scott
Mani Scott
Heidi Secord
Stephen Segal
Madeira Semins
Gina Seneca
Sister Joyce Serratore
Jason Shavers
Andrew Sheiner
Barbara Shema
Ed Shephard
Stevie Sheridan
Rochelle & Aryeh Sherman
Linda Shink
Dr. Mark Jay Shlomchik &
Laura Heberton-Shlomchik
Jennifer Shorstein
Gregory & Kathy Short
Janine Sidoruk
Kurt Siebenthaler
Matthew Siegler
Harry Sill
Dr. Saul & Barbara Silver

Phyllis Silver
Suzanne Silver
Jill Silvernail
Melanie Simko
Larry Simms
Daniel & Susan Simmons
Henry & Colleen Simonds
Amanda Sinkus
Narelle Sissons
Christina Skinner
Dr. Patti Skorupka
Dr. Carol A. Slomski
Stella Smetanka & Kemal Mericli
Bruce Smith
Gail Smith
Holly Coryell Smith
Nat Smith
Nicole Smith
W. Henry & Mary Wynn Snider
Gloria W. Snyder
Beth & Randy Soergel
Marguerette Sokol
Andrea Somberg
Rhoda Sommer &
Donald Friedman
John & Ingrid Sonnichsen
Miranda Bartira Sousa
Jessica Spears
Jonathan Speicher
Rick & Cathy Speicher
Susan Speicher
Charles Spence
Upasana Sridhar
Christopher St. John
Patricia Stack
Tawanda M. Stamps
Kathy Staresinic
Lorraine Starsky &
Peter E. Oanes
Justin Statton
Cheryl Stauffer & Robert Dantoni
Francine Steger
Barb & David Steinberg
Jane & Robert Steineck
Hanna & Michael Steiner
Dr. Tim & Dr. Kimberly Steinhauer
Judy M. Stern
Susan Steving
Faith Stipanovich
Nora Stockhausen

Evan Stoddard
Eloise Stoehr
John D. Stofcik
Ellen Stolpe
Jennifer Strang
Dr. Fay Stricklin
Alison & William Strome
Regina Stroud
Kristin A. Stumm
Judy Stultz
Elizabeth Style
Peter Su & Karen Dusen
Paula Suhrbier
Ramona Sulkowski
Beverly Sullivan
Candace Sullivan
Deborah Sullivan
Peggy Sullivan
Mary Sutton
Valerie Swigart
Jacinta Synnott
Carol Lynn Tabas
Cynthia Taibbi
Katherine Tarara
Aaron Tarnow
Edward Tarzia
Tom Tatone
Chris Taylor
Kathleen & Ronald Tekely
Laura & Gregory Teufel
Danielle & Noah Theriault
Mark Thiel
Dr. Shannon Thieroff
Franklin Thomas
Marsha & Michael Thomas
Mary C. Thomas
Vinay Thomas
Jill Thompson
Mike Thompson & Linda Wallen
Mark Tierno
Frank & Helen Todd
Kyle Tomer
Kathy & Theodore Towns
Melissa Trax
Michael Trimm
David Trimmer
Kelly Trumbull
Lisa Houser
Bahni Turpin
Ann Truschel

Susan Tsu
Gene Tuma
Debora Turner
Sandra & John Turner
Bahni Turpin
Ann Ultsch
Lyn Ultsch
Deborah Underwood
Caryl Unseld
Stewart Urist
Ann Urwin
Cecile Usner
Catherine Valley
Thomas Valenza
Susan & John Van Cleve
Patricia Vargo
Rosemarie Varsanik
Paul Vasquez
Claire & Melvin Vatz
Dr. Elizabeth Venditti
Elizabeth Veri
Colleen Vermillion
Stacey Vespaziano
Barbara Vilanova
Aaron Vignale
Anthony & Betsy Villiotti
David Vinski
Jon Volkman
Pam Volz
Victor Vrabel
Bridget Vyas
Angela Wagner
Karen Wagner
Robert & Marilyn Wagner
Daniel Waldmann
Deborah Walker & Paul Floreanci
Inez Walker
Tina Walker
Kathleen Walton
Erin Walsh
Kathleen Walton
Kathleen Waltz
Amy Wander
Michele Wang
Mrs. Thomas Wanko
Sturgis Warner
Anne Marie Warren
Anne & Ronald Watzman
Brenton Weinert
H. Weinraub

Amy Welch
Deborah Wells
Ray Werner
Elaine Wertheim
Chad Wertley
Dana & David Wettergreen
Deanna Whetsell
Veronica White
Victoria White
Jonathan & Elaine Widich
Susan Wiesert
Rachel Wilkinson
Beth Williams, Esq.
Drew Leigh Williams
Katie Williams
Odies Williams
Rhonda Williams
Sara & Craig Williams
Glenna & Robert Wilson
Jill Witherell
Nora Wittich
Mary Witul
Harton Wolf
Ellen Wolfe
Lily Wolfe
Sharyn & Herbert Wolfson
Jim Wood
Thomas Woods
Amie Worley
Lori Wortman
J. Taylor Wright
Eileen Yacknin
Barbara & Marc Yergin
Karen Yost
Cynthia Yount
Kathleen Zabetakis
Sandra & Howard Zaharoff
MaryAnn Zajko
Marilyn Zawoyski
Steve Zelicoff
Susan Zelicoff
Anna Ziegler
Richard Ziegler
Bruce Zewe
Josh Zimmerman
Kristina Zimmerman
Elsa Zollars
Nathan Zoob

DONOR RECOGNITION

CORPORATE MATCHING GIFTS

Please check with your company's personnel department to find out if your employer offers a matching gift program.

If your donation and City Theatre (Arts and Culture) meet your company's guidelines, the company cuts a check to City Theatre for the same amount as the your donation (and sometimes even two, three, or four times that amount!).

The following is a sample list of corporations with an employer matching gifts program. Those in **bold** currently support City Theatre.

American Eagle Outfitters

American Express
Apple
Applied Test Systems
Avon
Axiell Corporation
BNY Mellon
Boeing
BP (British Petroleum)
Bristol-Myers Squibb
Car Max
Chevron
Citizens Financial Group
Coca-Cola
Delta
Disney
Dominion Foundation

Eaton Corporation

ExxonMobil
Federated Department
Stores
Ford Foundation
GAP Corporation
General Electric (GE)
GlaxoSmithKline
Google
Hewlett-Packard (HP)
Highmark Blue Cross Blue Shield
H.J. Heinz Company
The Home Depot
Houghton-Mifflin
IBM Corporation
John Hancock Mutual Life
Insurance Company

Johnson & Johnson

JP Morgan
MBIA
McKesson Corporation
Merck
Microsoft
PepsiCo
Pfizer, Inc.
Pittsburgh Valve & Fitting
PNC
PPG Industries, Inc.
Soros Fund Management
Starbucks
State Farm
Verizon
Waste Management

WAYS TO GIVE:

Online:

Visit CityTheatreCompany.org/donate to make a tax-deductible contribution anytime.

Scan here:

Grab your Smartphone and take a picture of the following code — you'll be taken right to our donation page for credit card payment.



By Mail:

Mail a check or money order, payable to "City Theatre," to:
City Theatre, Attn: Development
1300 Bingham Street, Pittsburgh, PA 15203

By Phone:

(or for donations of stock or estate gifts)
Call Dianne Duursma, Director of Development, at (412) 431-4400 x278

DONOR RECOGNITION

CORPORATE, FOUNDATION, AND GOVERNMENT SUPPORT

City Theatre extends its sincere gratitude to the following businesses, foundations and public agencies for their leadership support. Gifts acknowledged here were made between July 1, 2021 - August 30, 2022.

STEEL (\$100,000 +)

Allegheny Regional Asset District
The Heinz Endowments
The Hillman Foundation
National Endowment for the Arts
(American Rescue Plan)
The Richard King Mellon
Foundation
The Shubert Foundation
U.S. Small Business
Administration
(SVOG Program)

DIAMOND (\$50,000-\$99,999)

The Benter Foundation
The Philip Chosky Charitable and
Educational Foundation
DDI
The Grable Foundation
Pennsylvania Department of
Community and Economic
Development (DCED)
The Pittsburgh Foundation
R3A Architecture
The Donald and Sylvia Robinson
Family Foundation

PLATINUM (\$20,000-\$49,999)

Anonymous
The Buhl Foundation -
Frick Educational Fund
The Jack Buncher Foundation
FlySpace Productions
The Huntington National Bank
K&L Gates LLP
National Endowment for the Arts
(Grants for Arts Projects)
Pennsylvania Department of
Education
James M. and Lucy K.
Schoonmaker Foundation
UPMC/UPMC Health Plan
Hilda M. Willis Foundation

GOLD (\$10,000-\$19,999)

Byham Family Charitable
Foundation
Giant Eagle Foundation
National New Play Network
Opportunity Fund
Pennsylvania Council on the Arts
PNC Financial Services Group
The Tides Foundation (Venturous
Theatre Fund)

SILVER (\$2,500-\$9,999)

Fabled Table Catering
Human Habits
Landesberg Design
Penn Brewery
Pittsburgh Community
Broadcasting
W. I. Patterson Charitable
Foundation
Wigle Whiskey

BRONZE (UP TO \$2,499)

1 Hood Media
Actor 's Equity Foundation
Americans For The Arts
Carmella 's Plates and Pints
The Cheesecake Factory
Greater Pittsburgh Arts Council
(GPAC)
Highmark Blue Cross Blue Shield
La Palapa - Mexican Restaurant,
Bar and Catering
LeMont
Pennsylvania Council on the Arts
(American Rescue Plan)
Streets on Carson/Streets
on the Fly

Clyde's Community Partner:

Community Kitchen Pittsburgh uses food as the foundation to change lives and strengthen communities by providing culinary training and opening career pathways to individuals who experience barriers to employment. <https://www.ckpgh.org/>



Amachi Pittsburgh raises awareness and delivers services to give children a fighting chance in Allegheny County—when the community is knowledgeable about the challenges that they face, children have the support they need to thrive. This awareness creates policy-level change so that youth are unburdened from a system that has made them more vulnerable to the criminal justice system. <https://amachipgh.org/>



Literacy Pittsburgh (Season Partner) offers free educational programs for adults and families in Allegheny County and Beaver County. Each year, they help nearly 5,000 people in the Greater Pittsburgh area improve their reading, writing, math, English language, digital literacy, and workplace skills.



DONOR RECOGNITION

'IN HONOR OF' GIFTS

Honor someone you love. Honor someone who loves theater.

IN HONOR OF DIANNE DUURSMA, CFRE, CITY THEATRE DIRECTOR OF DEVELOPMENT – CELEBRATING HER 16TH SEASON

Given By
Jamini Vincent Davies
Jeffrey Pollock
Kerry and Scott Shiller

IN HONOR OF THE STAFF OF CITY THEATRE

Given By
Cathy and Kenneth A. Glick, MD

IN HONOR OF MATTHEW GALANDO, CITY THEATRE BOARD MEMBER

Given By
Suzanne & Edward Galando

IN HONOR OF CAITLIN GREEN – CITY THEATRE BOARD PRESIDENT

Given By
Paul Epstein & Rita Ray

IN HONOR OF MICHELLE MCCREERY, ESQ., CITY THEATRE BOARD MEMBER

Given By
Louise Herrle & Godfrey Molyneux

IN HONOR OF JANET WALSH, A LIFELONG LOVER OF THEATRE

Given By
Erin Walsh

'IN MEMORY OF' GIFTS

Memorial tributes honor special friends and family members.

IN MEMORY OF JANE CALLOMON ARKUS

Given By
Anonymous

IN MEMORY OF THOMAS J. PHILLIS

Given By
The Thomas J. Phillis Family

IN MEMORY OF JOANN SCHLOTTERER A SWEET LADY WHO ADORED THE THEATRE

Given By
Kathy Marks

IN MEMORY OF DR. SAMUEL A. YOUSEM A DEAR FRIEND WHO ENJOYED AND LOVED CITY THEATRE

Given By
Elisa Recht Marlin

CITY THEATRE'S MASSARO FAMILY PLAZA

In 2021, City Theatre honored Pittsburgh's Massaro Family by naming the public space located in front of the new Philip Chosky Production Center after the family's late patriarch and matriarch: Joseph, Jr. and Carol.

City Theatre and the Massaro Family have a long-history, going back to 1990 when the family's construction company served as general contractor for the renovation of our then new home on the South Side. Later, the Massaro Corporation served in the same capacity for the conversion of the old Walter Long Manufacturing Company property into our 6,000 square foot production center, which opened in 2020.

Joseph and Carol had four children (including David Massaro, who served as City Theatre's board president from 2013-2015) and 15 grandchildren and great-grandchildren.

City Theatre is proud to showcase this long-standing partnership with The Joseph & Carol Massaro Memorial Plaza at 1315 Bingham Street and we are deeply grateful for the family's many years of support.



The Massaro family in The Joseph & Carol Massaro Memorial Plaza. Photo credit: Kristi Jan Hoover

DONOR RECOGNITION

FUNDER SPOTLIGHT: THE DONALD & SYLVIA ROBINSON FAMILY FOUNDATION

Donald Robinson (1925 - 2017)

Sylvia Robinson (1929 - 2018)

The lives and legacy of Donald and Sylvia Robinson continue on through their namesake foundation, The Donald & Sylvia Robinson Family Foundation. Now led by their children and grandchildren, the Foundation has recently made a significant multi-year grant to City Theatre, making it the lead funder behind the organization's education programming: the Young Playwrights Contest and Young Playwrights Festival.

Married for 69 years, Sylvia and Donald shared a life-long interest in the arts, with Sylvia even appearing on stage in the City Theatre New Works Festival and Jewish Community productions, and the foundation supports a wide range of organizations in Pittsburgh as well as Israel.

Over the next five years, City Theatre will continue to expand and grow its reach and impact in the lives of middle and high school students throughout Western Pennsylvania due to this extraordinary gift of support. Later this spring, we look forward to a permanent recognition of The Donald and Sylvia Robinson Family Foundation as we re-name our Main Stage theatre stairwell in Sylvia's honor.

LAND ACKNOWLEDGMENT

City Theatre would like to acknowledge that our buildings reside in Dionde:gâ, the Seneca language name for the Pittsburgh region. We work and create art on the unceded, ancestral lands of many Indigenous peoples including the Seneca Nation, members of the Haudenosaunee (hoe-dee-no-SHOW-nee) Confederacy (also referred to by the French as the Iroquois Confederacy). The Confederacy was comprised of the Mohawks, Oneidas, Onondagas, Cayugas, and Senecas and formed to unite the five nations and create a peaceful means of decision making. The Seneca's jurisdiction over the area also saw the region as home to the Lenape (also referred to as the Delaware), the Shawnee, and others. As recently as the 1960s, one-third of the Seneca's tribal lands were taken by the U.S. government to create the Kinzua Dam northeast of the city.

The region's history also stretches back further to the prehistoric cultures the Adena people, who were followed by the Hopewell, then the Monongahela and Osage.

City Theatre also recognizes its participation in and benefit from the systemic exclusion of Black, Latinx, Asian, Middle Eastern and all People of Color. We specifically recognize and acknowledge the treatment of the enslaved Africans and their descendants in the Pittsburgh community. We honor them by committing to creating an anti-racist space for the creation and enjoyment of theater.

We are mindful that our work here is possible because the land and lives of people native to this place were stolen. Generation upon generation (past, present, and future) of indigenous people here and all over the world are respectful stewards of the earth and its resources. Through this acknowledgement, I invite you to join me in paying respect to the elders both past and present.

We encourage you to visit the Council of Three Rivers American Indian Center to learn more and support their work: <http://www.cotraic.org/>

WHY GIVE



Julianne Avolio performs in *An Untitled New Play* by Justin Timberlake, created by Matt Schatz, which enjoyed its world premiere at City Theatre in a co-production with Pittsburgh CLO in 2021. This production, twice-delayed due to the pandemic, was a culmination of four years of development in partnership between two local legacy arts organizations which resulted in rave reviews and a national audience.

For 47 years, City Theatre has remained one of the most beloved, impactful, and dynamic cultural organizations in Pittsburgh. From its nationally-recognized programming of contemporary plays to its work in the schools and community, City Theatre continues to reinvent itself. The largest performing arts organization located outside of the Cultural District, City Theatre is notable for both the excellence of its artists and art as well as an audience and donor base inspired by thoughtful and thought-provoking new work.

So why give?

New plays exist without the safety net of tradition. New plays are risky by their nature, but essential for a vibrant, diverse, and ever-evolving art-form. During these challenging times, your support helps ensure City Theatre's recovery from the pandemic AND is a critical investment in preserving the future of the theater field and its artists.

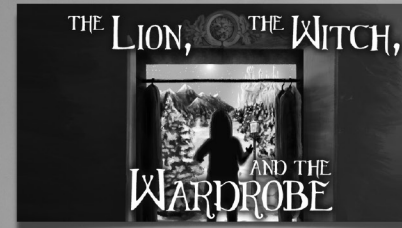
A SEASON OF SUSPENSE, HOPE, AND WONDER AT

prime
stage

THEATRE CO

FRANKENSTEIN

Directed by Liam Macik
November 4 - 13, 2022



Directed by Wayne Brinda
March 3-12, 2023



Directed by Scott Calhoon
May 5-14, 2023



Directed by Linda Haston
January 20-29, 2023



Directed by Laura Wurzell
June 16-25, 2023

Performances are at the
New Hazlett Center for
Performing Arts

6 Allegheny Square East on Pittsburgh's
North Side



Flex Plan Memberships available now!

www.primestage.com



AN INVITATION TO PARTICIPATE

**By walking through our doors, we invite you to join our community.
You are welcome here.**

Part of our mission is to challenge and engage a diverse audience.

Feel free to laugh. To cry. To react honestly.

This is live theater. Our artists are living and breathing right in front of you —
They need your reactions, not your distractions.

Bring your full self, but please ensure your actions do not harm other audience members.

Please be an audience member that joins with others, that has compassion for the experiences of others.

We're in the same space. At the same time. This is community.

2020 taught us that community is a privilege.

2020 also reinforced that we need to do better. Historically, theater has a culture of exclusivity.

Part of our anti-racism work at City Theatre is to break down barriers that limit access to art.

We ask you to join us in this imperative work.

We invite you to get to know our core values and to read our organizational code of conduct.

We want to hold ourselves accountable. If you have a negative experience in our space, we want to know. There are multiple ways to call us in. You can:

- Speak to a house manager
- Or any employee present with a City Theatre name tag
- Email the staff EDIA committee at comment@citytheatrecompany.org

We're here. We're listening. Let's build a better community together.

Specializing in High Expectations

Is it time to make your move?

Contact me for all of your real estate needs.



Berni Bishop Pirollo
REALTOR®, SRES

(O) 412-521-5500

(C) 412-638-1988

BerniBishop@TPRSold.com

BERKSHIRE HATHAWAY
HomeServices

The Preferred Realty

City Regional Office • 5801 Forbes Avenue
www.ThePreferredRealty.com



Berni Bishop Pirollo
2014-2015-2016-2017
2018-2019-2020-2021-2022

Ⓜ A member of the franchise system of BHH Affiliates, LLC



PARTNERSHIP

Celebrating what
we both love.

Design for the common good from Pittsburgh's South Side. landesbergdesign.com



Zero Waste Wrangler

Presents

F^{OOD} SCRAP^S compost

with
Clyde's

**Every Show
Sept - Oct**

All real food used in the performances will be made into a valuable soil amendment for farms, gardens and landscapes

Sign up today!

Compost at home using coupon code: ClydesCompost

Get four weeks of curbside collection OR
eight weeks of drop-off subscription FREE

www.zerowastewrangler.com

412-407-5988

VISIT CITY

SEASON SUBSCRIPTIONS

Enhance your City Theatre experience and take advantage of discounted ticket prices by becoming a subscriber. Choose 3 and flex options are available to best fit your interests and schedule. To subscribe, visit the Box Office, call 412.431.2489, or order online at CityTheatreCompany.org.

GROUP SALES

Save when you bring friends! Groups of 10 or more are eligible for significant discounts. In addition, we are happy to help you plan your event or party. For more information, contact Audrey at 412.431.4400 x227.

RUSH TICKETS

Persons under 30 years of age may reserve \$20 advance tickets, excluding Friday 8pm and Saturday 5:30pm performances. For these excluded show times, \$20 student tickets may be purchased at the Box Office beginning two hours prior to show time. Seniors age 62 and older may also take advantage of rush tickets, \$24 each. All discounted/rush tickets are subject to availability.

TICKET VALUES

Tickets prices vary by date and demand. In addition, pay-what-you-want performances are offered for each production. Call the box office for dates.

PARKING

City Theatre provides safe, convenient parking for \$10 via lot access at 1317 Bingham St, across from the theatre entrance. Parking is subject to availability. On-street parking meters are monitored until midnight on Friday and Saturday. Visit www.pittsburghparking.com for more information.

LATE SEATING POLICY

Our theatres are very intimate. Out of respect for both the actors and audience, late arrivals will be seated only at the discretion of house management. Consider arriving early to enjoy a beverage in the Gordon Lounge or to visit South Side's many eclectic shops and restaurants.

ELECTRONIC DEVICES

Please turn off all electronic devices. Ringing or vibrating cell phones, pagers, and watches disrupt the performance and interfere with the theatre's sound equipment. **No photography or video recording permitted during the performance.**

City Theatre is committed to providing an environment that is inclusive and welcoming to all patrons. Please identify any special seating needs to our Box Office staff when reserving your tickets in advance by calling 412.431.CITY (2489).



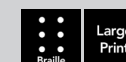
Wheelchair accessible seating is available in both the Mainstage and Hamburg Studio Theatres.



Selected performances of each production feature open captioning, audio description, and pre-show introductory workshops for those who are hearing impaired, blind, or have low vision. In addition, select productions will include an American Sign Language Interpreted performance. Performance dates are available online or by contacting the Box Office.



Assistive listening devices are available. Please see the House Manager for details.



Programs are available in both Braille and large print. Please see the House Manager for details.

CITY THEATRE STAFF

ARTISTIC

Marc Masterson
Clare Drobot
Monteze Freeland
Katie Trupiano
Michelle Iglesias

Co-Artistic Directors
Director of Education & Accessibility
Community Coordinator & Artistic Assistant

Emma Cummings
Sydney Dobbs
Alexx Jacobs
Leah Blackwood
Madison Michalko
Brad Peterson
Greg Messmer

Shop Foreman
Carpenter
Properties Manager
Lead Scenic Artist
Costume Shop Manager
Sound & Media Engineer
Master Electrician & Light Board Programmer

ADMINISTRATIVE

James McNeel
Sara Green Williams
Dianne Duursma, CFRE
Beth Geatches
Nikki Battestilli
Joel Ambrose
Audrey Fennell
Ian Denham
Tasha Matthews
Rachael Ellis
Amara Walls
Makaila Moulden
Hazy Jordan
Maddie Kocur
Emma Morganstein
Noah Welter
Dustin Medvid

Managing Director
Director of Finance
Director of Development
Development Associate
Marketing Director
Director of Ticketing & Patron Services
Ticketing Manager
Box Office Associate
Box Office Associate
Box Office Associate & Company Manager
Box Office Associate
Patron Services Manager
House Manager
House Manager
House Manager
House Manager
Facilities & Parking Manager

PRODUCTION

Tony Ferrieri
Rachel D'Amboise
Patti Kelly
John Brucker
Sam Karas

Director of Production & Resident Scenic Designer
Production Manager
Resident Production Stage Manager
Technical Director
Associate Technical Director

FOR THIS PRODUCTION

Monteze Freeland
Richard McBride
KJ Gilmer
Jason Lynch
Twi McCallum
Tomé Cousin
Samuel G.C. Muñoz
Noah Glaister
Lauren Connolly
Mars DeLamater
Jaime Ericson
Amelia Benson
Abigail Huchko
Emily Landis
Kellee VanAken

Director
Dramaturg
Costume Design
Lighting Design
Sound Design
Intimacy Coordinator
Fight Choreographer
Assistant Scenic Designer
Production Assistant
Production Assistant & Costume Shop Assistant
Costume Shop Assistant
Costume Shop Assistant
Prop Assistant
Carpenter
Audio Describer

CONSULTANTS

Landesberg Design
Clayton Slater Design
Human Habits
Kristi Jan Hoover
Fatima Bunafoor
Diaz Inclusion Consulting

Graphic Design
Program Design
Website Development & Video
Photographer
Talent & Equity Director
EDIA Consultants

FIERCE ADVOCATE

Always fighting for our clients' best interests – in the courtroom or around the negotiating table.



pollock | begg
Dedicated to Family Law

412.471.9000
pollockbegg.com

“2020 People of the Year (Theater)” – City Paper



The
URBAN
◦TAP◦

x x x x x



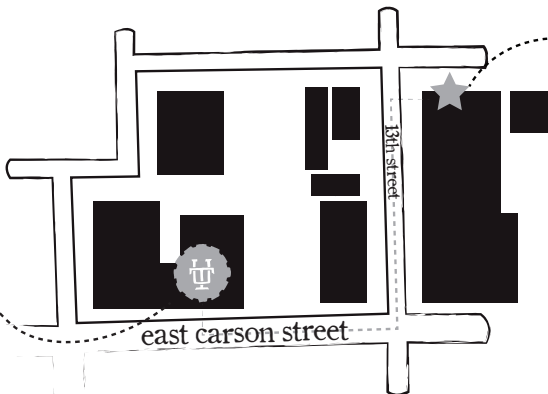
brunch • lunch • dinner



PRESENT THIS AD AFTER THE SHOW

&

RECEIVE 10% OFF DRINKS



YOU ARE HERE

WE ARE HERE

Located one block from the City Theatre on 12th & Carson

